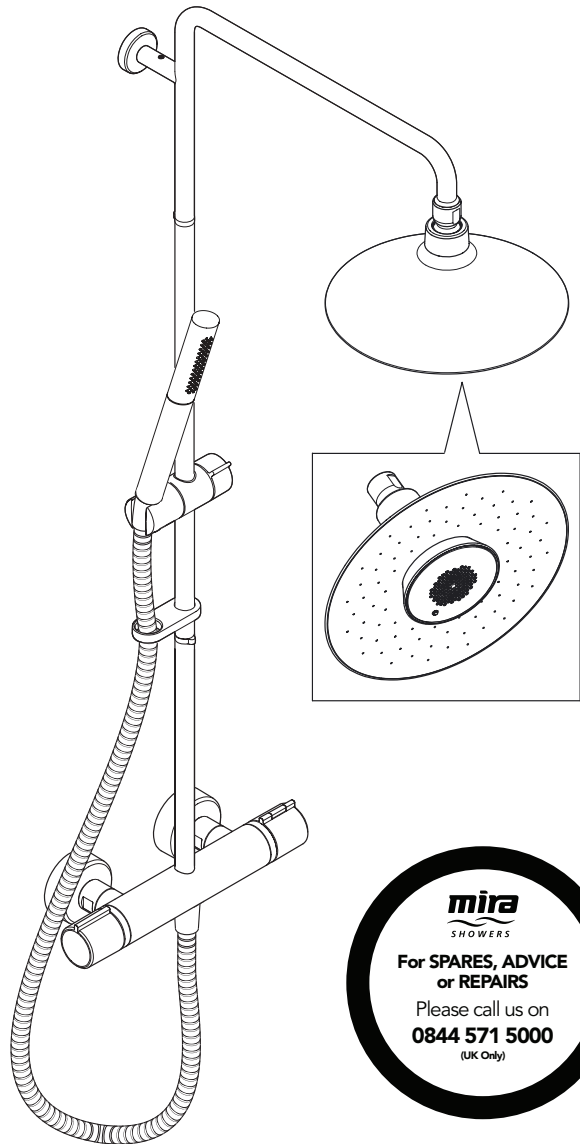


Mira Atom ERD With Moxie



These instructions must be left with the user

Installation & User Guide

Showering perfection

mira
SHOWERS

INTRODUCTION

Thank you for purchasing a quality Mira product. To enjoy the full potential of your new product, please take time to read this guide thoroughly, having done so, keep it handy for future reference.

GUARANTEE

For **domestic installations**, Mira Showers guarantee the Mira Atom against any defect in materials or workmanship for a period of **five** years from the date of purchase (shower fittings and Moxie speaker for one year).

For **non-domestic installations**, Mira Showers guarantee the Mira Atom against any defect in materials or workmanship for a period of **one** year from the date of purchase.

For terms and conditions refer to the back cover of this guide.

DESIGN REGISTRATION AND PATENTS

Design Registration GB 001225254-0003

Patents: GB 2 407 138

RECOMMENDED USAGE

Recommended Usage	
Domestic	✓
Light Commercial	✗
Heavy Commercial	✗
Healthcare	✗

SAFETY : WARNINGS

WARNING - This product can deliver scalding temperatures if not operated, installed or maintained in accordance with the instructions, warnings and cautions contained in this guide.

The function of a thermostatic mixing valve is to deliver water consistently at a safe temperature. In keeping with every other mechanism, it cannot be considered as functionally infallible and as such, cannot totally replace a supervisor's vigilance where that is necessary. Provided it is installed, commissioned, operated and maintained within manufacturers recommendations, the risk of failure, if not eliminated, is reduced to the minimum achievable.

WARNING - This product can deliver scalding temperatures if not operated, installed or maintained in accordance with the instructions, warnings and cautions contained in this guide.


The function of a thermostatic mixing valve is to deliver water consistently at a safe temperature. In keeping with every other mechanism, it cannot be considered as functionally infallible and as such, cannot totally replace a supervisor's vigilance where that is necessary. Provided it is installed, commissioned, operated and maintained within manufacturers recommendations, the risk of failure, if not eliminated, is reduced to the minimum achievable.

Mira thermostatic mixers are precision engineered and should give continued safe and controlled performance, provided:

1. They are installed, commissioned, operated and maintained in accordance with the manufacturer's recommendations.
2. Periodic attention is given, when necessary, to maintain the product in good functional order.

Caution!

1. Read all of these instructions and retain this guide for later use.
2. Installation must be carried out in accordance with these instructions, and must be conducted by designated, qualified and competent personnel.
3. Pass on this guide in the event of change of ownership of the installation site.
4. Follow all warnings, cautions and instructions contained in this guide.
5. Make sure that you fully understand how to operate this shower before use, read all operating instructions and retain this guide for future reference.
6. This product is not intended for use by persons (including children) with reduced physical, sensory or mental capabilities, or lack of experience and knowledge, unless they have been given supervision or instruction concerning the use of the product by a person responsible for their safety.
7. Children should be supervised to ensure that they do not play with the product.
8. **DO NOT** perform any unspecified modifications to the shower or its accessories. When servicing only use genuine Kohler Mira replacement parts.
9. **DO NOT** fit any form of outlet flow control. Only Mira recommended outlet fittings should be used.
10. **DO NOT** operate the temperature control rapidly, allow 10 – 15 seconds for the temperature to stabilise before use.
11. Care is required when adjusting flow or temperature, make sure that the temperature has stabilised.
12. Care is required if the product is turned off and back on during showering as this may result in unstable temperature. Ensure temperature has stabilised before re-using product.
13. Sunburn or skin conditions can increase your sensitivity to hot water. Make sure that you set the shower to a cooler temperature.
14. The water supplies to this product must be isolated if the product is not to be used for a long period of time. If the product or pipework is at risk of freezing during this period they should also be drained of water.
15. When this product has reached the end of its serviceable life, it should be disposed of in a safe manner, in accordance with current local authority recycling, or waste disposal policy.

16. This wireless speaker complies with CE directives.
17. To play your personal music files, you need a wireless BLUETOOTH® device. 
18. This device is rated to IPX4.
19. Check local regulations for proper disposal.
20. **DO NOT** submerge the wireless speaker.
21. **DO NOT** spray water directly into the speaker.
22. The wireless speaker and battery are rated to operate in temperatures up to 140°F (60°C). **DO NOT** expose to heat sources or install in any location where the temperature may exceed 140°F (60°C).
23. **DO NOT** expose batteries to sunlight, fire or other forms of excessive heat.
The BLUETOOTH® word mark and logos are registered trademarks owned by Bluetooth SIG, Inc. and any use of such marks by Kohler Co. is under license. Other trademarks and trade names are those of their respective owners.

CE Radiation Exposure Statement for Mobile Devices

This equipment complies with CE radiation exposure limits set forth for an uncontrolled environment. This equipment should be installed and operated with a minimum distance of 200 mm between the radiator and your body. The transmitter must not be co-located or operating in conjunction with any other antenna or transmitter.

SPECIFICATIONS

Bar Valve Specification

Pressures	
Maximum Static Pressure	10 Bar
Maximum Maintained Pressure	5 Bar
Minimum Maintained Pressure (Gas Water Heater)	1.0 Bar (for optimum performance supplies should be nominally equal)
Minimum Maintained Pressure (Gravity System)	0.1 Bar (0.1 bar = 1 Metre head from cold tank base to shower handset outlet)
Connections	
Hot - Left	1/2" BSP to pipework, 3/4" BSP to valve
Cold - Right	1/2" BSP to pipework, 3/4" BSP to valve
Outlet - Bottom	1/2" BSP Male to flexible hose
Note! This product does not allow for reversed inlets and will deliver unstable temperatures if fitted incorrectly.	
Thermostatic Shut-down	
For safety and comfort the thermostat will shut off the mixing valve within 2 Seconds if either supply fails (achieved only if the blend temperature has a minimum differential of 12°C from either supply temperature).	
Temperatures	
Close temperature control is provided between	20°C and 50°C
Optimum Thermostatic Control Range	35°C to 45°C (achieved with supplies of 15°C cold, 65°C hot and nominally equal pressures).

Recommended Hot Supply	0°C to 65°C (Note! The mixing valve can operate at temperatures up to 85°C for short periods without damage. However for safety reasons it is recommended that the maximum hot water temperature is limited to 65°C).
Minimum Recommended Differential between Hot Supply and Outlet Temperature	12°C at desired flow rates.
Minimum hot water supply temperature	55°C.

Wireless Speaker Specification

Operating Temperature	0°C - 60°C
Maximum Relative Humidity	100% condensing
USB Cable Length	1 m
Output Power	1.5 Watts into 4 Ohms
Total Harmonic Distortion	<1% at 1 kHz full output power
BLUETOOTH® wireless range	10 m
Battery Charge Time	7 hours
Play Time*	7 hours
Charge Voltage	USB 5 V
*Actual battery life will vary with use, settings and environmental conditions. Rechargeable batteries have a limited number of charge cycles.	

INSTALLATION

Suitable Plumbing Systems

Gravity Fed:

The thermostatic mixer must be fed from a cold water cistern (usually fitted in the loft space) and a hot water cylinder (usually fitted in the airing cupboard) providing nominally equal pressures.

Gas Heated System:

The thermostatic mixer can be installed with a combination boiler.

Unvented Mains Pressure System:

The thermostatic mixer can be installed with an unvented, stored hot water system.

Mains Pressurised Instantaneous Hot Water System:

The thermostatic mixer can be installed with systems of this type with balanced pressures.

Pumped System:

The thermostatic mixer can be installed with an inlet pump (twin impeller). The pump must be installed on the floor next to the hot water cylinder.

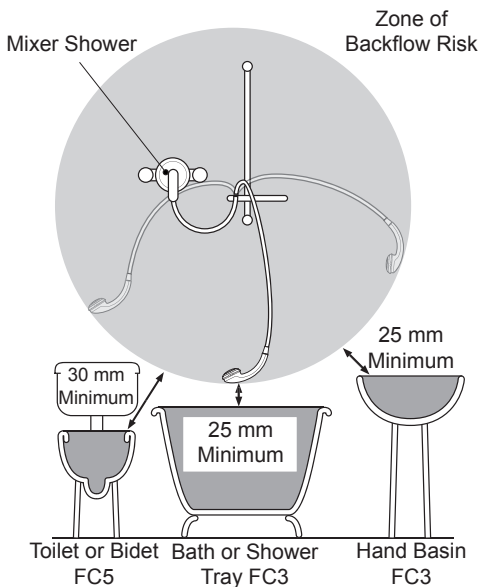
General

Installation must be carried out in accordance with these instructions, and must be conducted by designated, qualified and competent personnel.

The installation must comply with the "Water Supply Regulations 1999 (Water Fittings)" or any particular regulations and practices, specified by the local water company or water undertakers.

Note! Make sure that all site requirements correspond to the information given in section: 'Specifications'.

1. The product must not be installed in an area where it may freeze. Pipework to the product that could become frozen must be properly insulated.
2. Do not install the product in a position in which service access is restricted.
3. For stud partitions alternative fixings may be required.
4. Isolating valves must be installed close to the product for ease of maintenance.
5. Pipework must be rigidly supported and avoid any strain on the connections.
6. Pipework dead-legs should be kept to a minimum.
7. If pipework enters the product from the rear through a hole in the wall, provision must be made to prevent water ingress back into the wall structure.
8. The position of the shower and shower fittings must provide a minimum gap of 25 mm between the showerhead and the spill over level of any bath, shower tray or basin and a minimum gap of 30 mm between the showerhead and the spill over level of any toilet, bidet or other appliance with a Fluid Category 5 backflow risk (see diagram).



9. The showerhead should be positioned so that it discharges down the centre line of the bath or across the opening of a shower cubicle.
10. Only use the inlet connections supplied with the product. **DO NOT** use any other type of fittings.
11. All pipework must be checked for leaks before the product installation is completed. The product should be pressurised & the inlet & outlet connections inspected.
12. **DO NOT** overtighten connections, screws or grubscrews as product damage may occur.
13. Upon completion of installation, or if the product is dismantled during installation or servicing, then the product must be inspected to ensure that there are no leaks.

14. Having completed the installation, make sure that the user is familiar with the operation of the product.

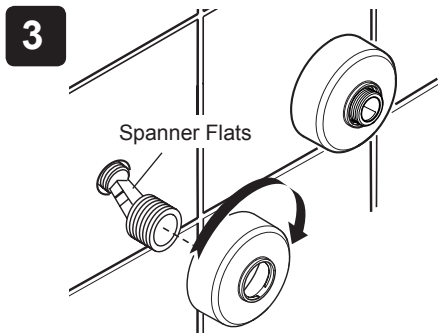
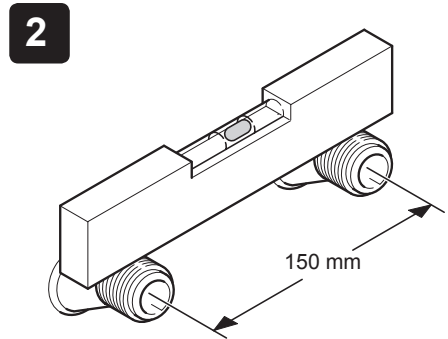
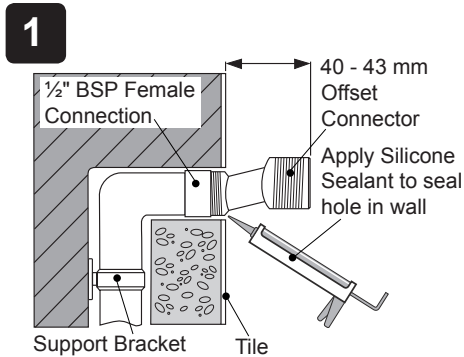
Installation of the Bar Valve

Important! Before installing the pipework, please ensure that there is a minimum of 1065mm height clearance to allow for the rigid riser and overhead to be installed above. If installing in a restricted height area, a shorter riser rail can be ordered as a spare part.

The thermostatic bar valve should be installed where it will be supported by fixed pipework.

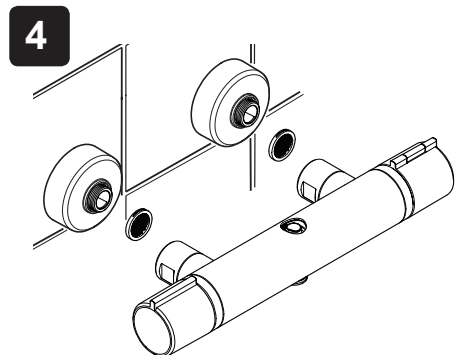
1. Install the pipework, making sure that it is set at the correct distance apart (150 ± 24 mm) and **solidly fixed**.
2. Apply suitable thread sealant (not supplied) and attach the offset connectors to the pipework in the wall. The offset connectors must protrude between 40 and 43 mm from the finished wall.

Note! Connections are: **Hot-Left, Cold-Right**. This is very important as this product does not allow for reversed inlets.



Tighten the offset connectors using a suitable spanner. Make sure that the connectors are level and set at the correct distance apart, using the bar valve as a guide to spacing.

Screw the concealing plates onto the offset connectors until they come into contact with the wall.



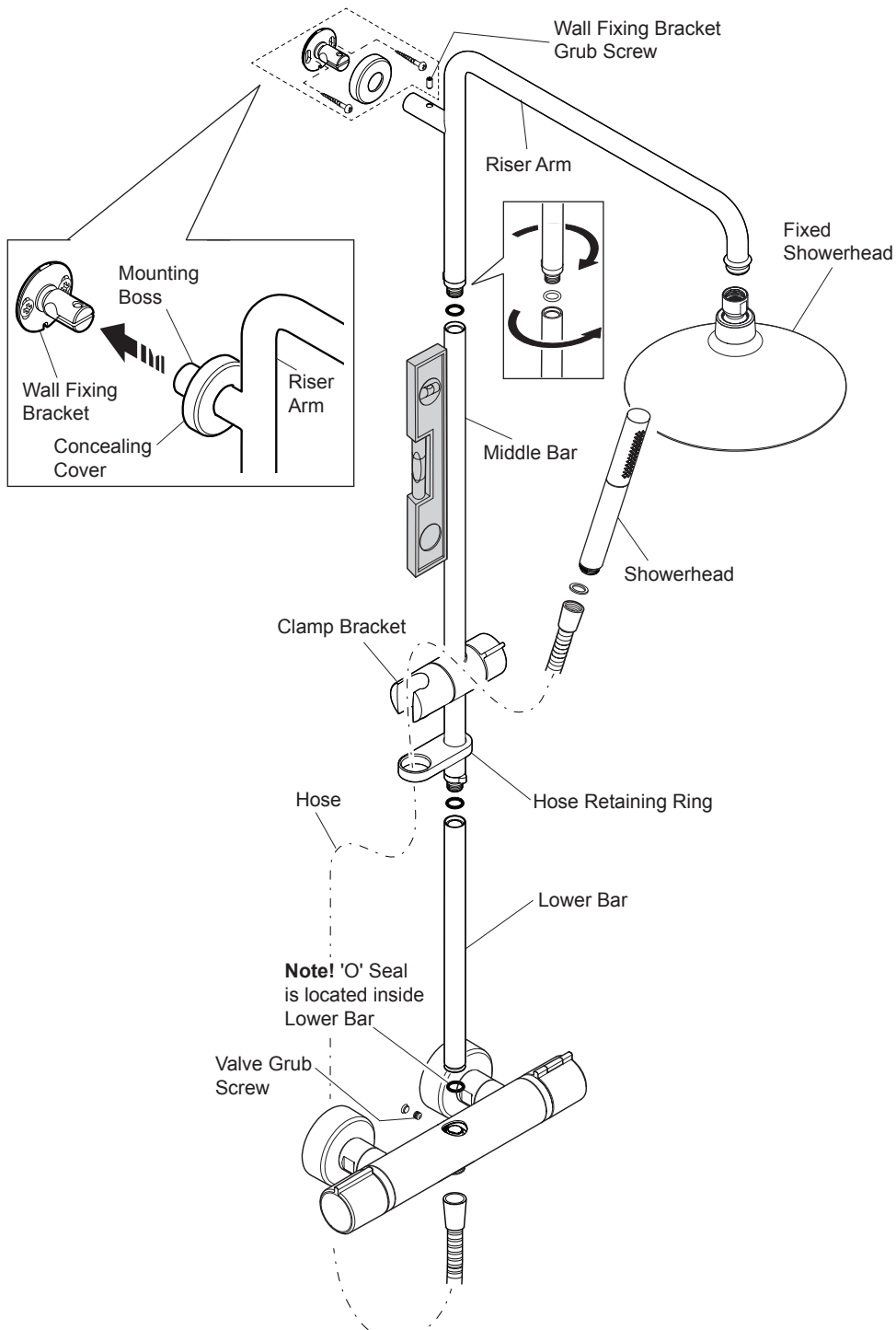
Caution! Make sure that the supply pipework is flushed before installing the Bar Valve.

Assemble the bar valve with a sealing washer/filter in each inlet and attach to the offset connectors.

Note! Connections are: **Hot-Left, Cold-Right**.

Installation of the Shower Fittings

1. Slide the hose retaining ring and the clamp bracket onto the middle bar, and then screw the middle and lower bar sections together.
2. Screw the riser arm to the middle and lower bar section.
3. Push the riser bar into the top of the bar valve.
Note! The riser bar must be located correctly, push down firmly to seat it.
4. Insert the wall fixing bracket into the riser arm mounting boss, then swivel the bar if necessary to reposition the wall fixing bracket against the wall.
Note! The grubscrew mounting hole must be positioned at the top.
5. Mark the holes for the wall fixing bracket.
Note! Use a spirit level to ensure the bar is vertical.
6. Remove the wall fixing bracket from the mounting boss then remove the riser bar from the bar valve.
7. Drill two holes to suit the wall fixings, ensuring that the bar valve is protected from debris. Fix the bracket to the wall.
8. Refit the riser bar into the bar valve and then put the concealing cover onto the riser arm mounting boss.
9. Push the riser arm mounting boss onto the wall fixing bracket.
10. Fit and tighten the grubscrew (2.5 mm hexagonal key) into the hole on top of the mounting boss then push the concealing cover over the wall fixing bracket.
11. Tighten the grubscrew at the valve end and fit the grubscrew cover.
12. Screw the fixed shower head onto the riser arm. Make sure that the washer is fitted.
Note! The Moxie wireless speaker does not have to be fitted at this stage.
13. Fit the shower hose onto the bottom outlet of the bar valve.
Note! The shower hose has slightly different sized conical connections at each end (the smaller diameter / longer length conical is identified with a **Red** protective cover or a **White** label). The end with the red cover or white label connects to the showerhead, the clear end connects to the valve.
14. Push the shower hose through the retaining ring and screw it to the showerhead.
15. Place the showerhead into the clamp bracket, adjusting the angle and height to the users preference.



COMMISSIONING

Bar Valve Commissioning

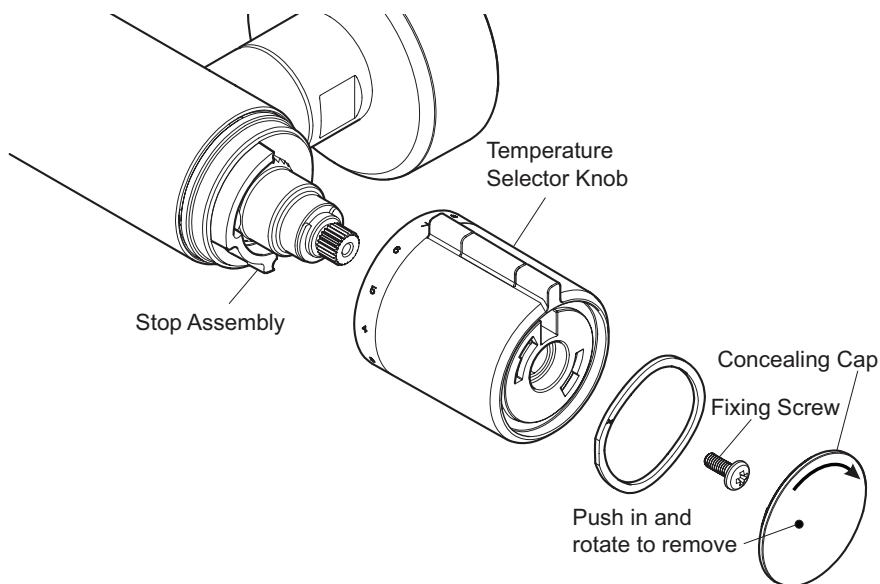
Maximum Temperature Setting

Before using the shower, the maximum temperature must be checked to make sure that it is at a safe level. It has been preset to a safe showering temperature under ideal conditions at the factory, appropriate for most systems. However, site conditions and personal preference may make it necessary to reset this temperature.

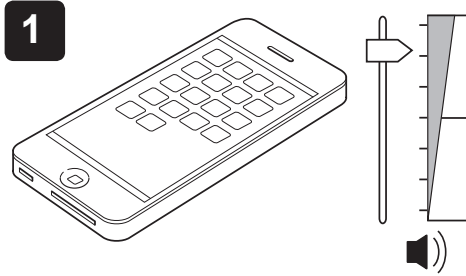
Note! Make sure that the hot water temperature is at least 55°C and that there is sufficient supply.

Caution! Before testing the mixer, make sure that the hot and cold water is flowing correctly by exercising the temperature selector knob between the cold and hot stops.

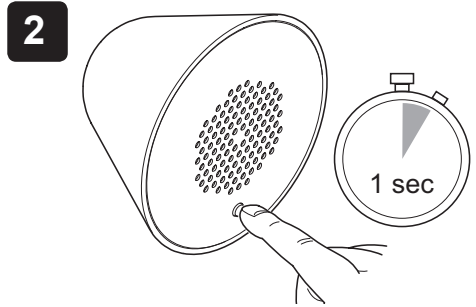
1. Turn the temperature selector knob anticlockwise until it stops and test that the temperature of the water from the shower outlet is hot enough.
2. If not, depress the override button and carefully rotate the knob further. If the water temperature is still not hot enough complete the following procedure.
3. Rotate the temperature selector knob back to the override position.
4. Push in and rotate the concealing cap clockwise to remove. Remove the fixing screw.
5. Pull off the temperature selector knob without disturbing the stop assembly.
6. Replace the temperature selector knob so that the lever is the 1 O'clock position.
7. Rotate the temperature selector knob against the stop, wait for the water to stabilise and test that the temperature of the water from the shower outlet is hot enough.
If the water temperature is still not hot enough repeat the procedure until a maximum safe temperature is achieved at the override position.
8. Refit and tighten the fixing screw, refit the concealing cap.



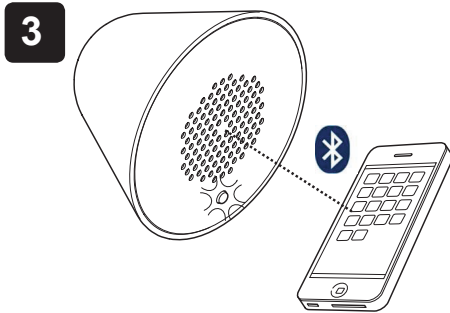
Wireless Speaker Pairing



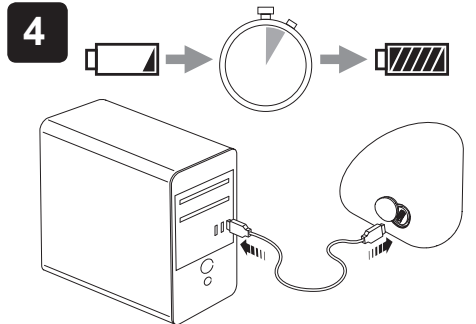
If required set your BLUETOOTH® to ON. Set your music device to midrange volume before connecting to the wireless speaker



Press the power button for 1 second to power the wireless speaker ON or OFF.



The light will blink blue to indicate pairing mode. Pair with your BLUETOOTH® device. If a password is required enter '0000'. The light will turn solid blue when connected.



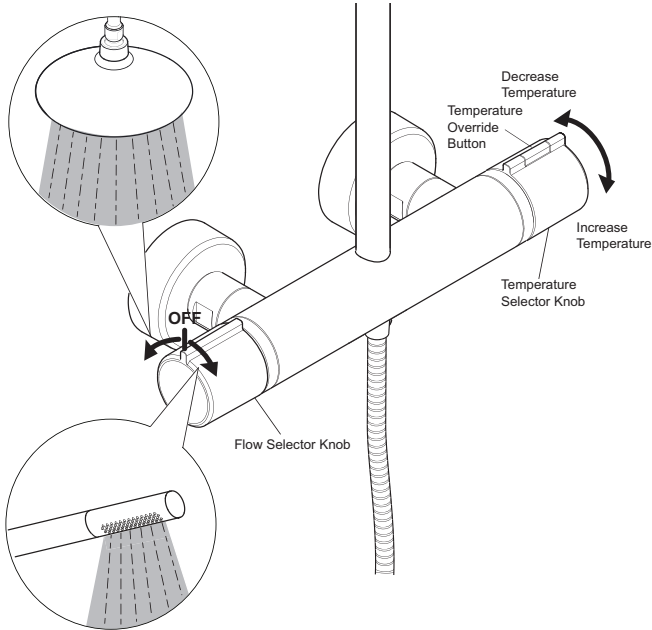
Use the USB cable provided to recharge your Moxie speaker. Always ensure the sealing plug is re-fitted before use.

Wireless Speaker LED Status

LED Status – Charging Mode	
Red blink	Battery is charging
Red	Battery recharge is complete
LED Status – Operating Mode	
Blue blink	BLUETOOTH pairing mode
Blue	Connected to a BLUETOOTH device
Blue/red blink	Connected to a BLUETOOTH device. Battery is low
Note! If pairing is lost, the wireless speaker will power OFF after 90 seconds.	

OPERATION

Bar Valve



Adjusting the Temperature

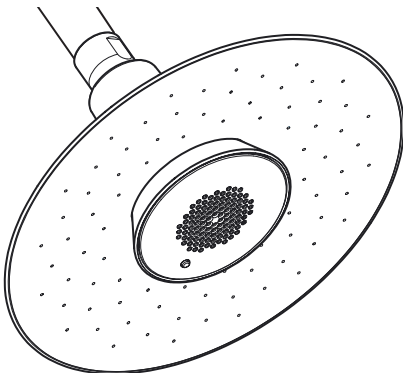
The temperature is controlled by rotating the temperature selector knob. For safety reasons, the temperature is limited by an override stop. To obtain a higher temperature, press the override button on the temperature selector knob and continue to rotate the knob.

Adjusting the Flow

The flow is controlled by rotating the flow selector knob to either the overhead or showerhead mode.

Wireless Speaker

The Moxie showerhead does not have to be stored in the fixed showerhead. At the end of your shower it can be removed and placed on the stand in your bathroom.



Turn on your music device and press play.

Turn on the Moxie speaker by pressing the **ON** button for approximately 1 second.

Music will come out of the speaker.

Place the speaker in the showerhead.

Note! The speaker will be held in position by magnets.

Enjoy your shower. At the end of your shower, remove the speaker from the showerhead.

Press the button for approximately 1 second to turn **OFF**

Place the speaker on the stand.

FAULT DIAGNOSIS

If you require a Mira trained service engineer or agent, refer to section: '**Customer Services**'.

Bar Valve Fault Diagnosis

Symptom	Cause	Recommended Action
Water too hot or too cold	<p>Inlets reversed (hot supply to cold supply). Check filters for any blockage.</p> <p>Check the maximum temperature setting (If you have a combination type boiler it may not be producing sufficient hot water at the desired flow rate).</p> <p>Installation conditions outside operating parameters.</p>	<p>Rework inlet pipework.</p> <p>Remove and clean filters.</p> <p>Fit a flow regulator to the shower valve outlet.</p> <p>Refer to Specifications and Commissioning.</p>
Poor temperature control	<p>Make sure that the inlet temperature differentials are sufficient.</p>	<p>Refer to Specifications.</p>
Fluctuating or reduced flow	<p>Check the shower handset, hose and filters for any blockage.</p> <p>Make sure that the maintained inlet pressures are nominally balanced and sufficient.</p> <p>Air lock or partial blockage in the pipework.</p>	<p>Remove blockage.</p> <p>Refer to Specifications.</p> <p>Remove blockage.</p>
Water leaking from the shower handset/overhead	<p>Normal for a short period after shut off.</p>	<p>Check that the pressures are not in excess of the specifications for this product.</p>

Wireless Speaker Fault Diagnosis

Symptom	Cause	Recommended Action
After playing music loudly, the music stops even though a song is properly selected.	<p>Thermal shutdown</p>	<p>Shut down the system for 1 hour to allow the unit to cool. Make sure the area where the unit is installed does not exceed 60°C.</p>

Symptom	Cause	Recommended Action
The status LED is not illuminated.	Battery is not charged.	Use the USB cable provided to recharge the battery.
No sound plays through the speaker..	The song is paused.	Make sure the song is playing. If the song is paused, press the resume feature to continue playback.
	The volume is too low.	Make sure the volume is turned up high enough for proper enjoyment..
The wireless speaker is not connecting to my BLUETOOTH® device.	The BLUETOOTH device is not within range.	Make sure that the BLUETOOTH device is within range of your wireless speaker.
	The volume is too low.	Make sure the volume is turned up high enough for proper enjoyment.
	The BLUETOOTH device is not paired with the wireless speaker.	Pair your BLUETOOTH device with the wireless speaker according to the pairing instructions for your BLUETOOTH device.
	The BLUETOOTH requires password entry for pairing.	Enter "0000" for the password.
LED does not blink red when charging.	USB connection to the wireless speaker may be loose.	Check the USB connection to the wireless speaker and reconnect if necessary.
	No power to the USB port.	Make sure there is power to the USB cable

CLEANING

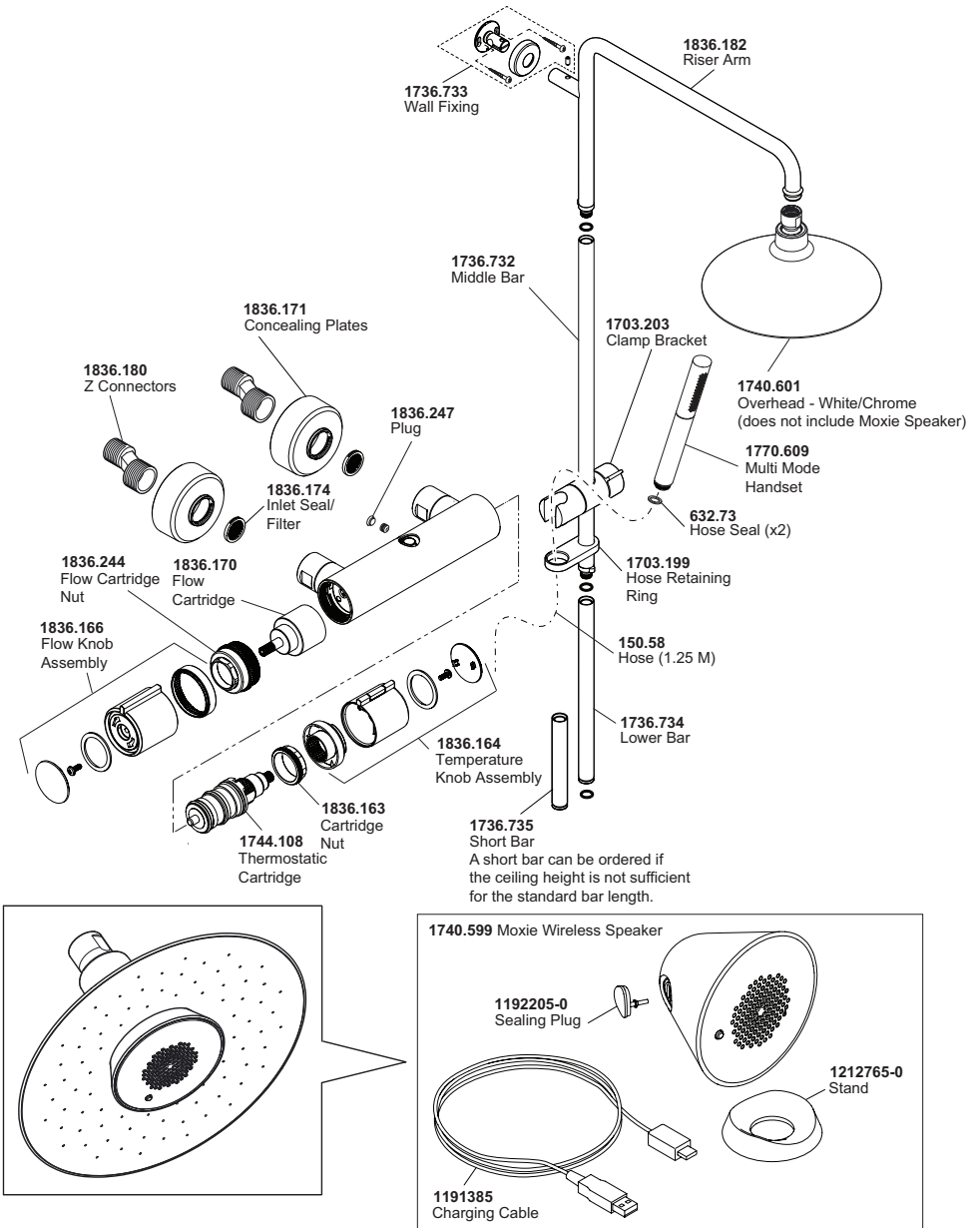
Cleaning

Many household cleaners contain abrasives and chemical substances, and should not be used for cleaning plated or plastic fittings. These finishes should be cleaned with a mild washing up detergent or soap solution, and then wiped dry using a soft cloth.

Important! The showerhead must be descaled regularly, keeping the showerhead clean and free from limescale will ensure that your shower and showerhead continue to perform to their maximum. A blocked showerhead can restrict the flow rate and may cause damage to your shower.

The Moxie speaker must only be cleaned with a damp cloth and then wiped dry. Do not spray, submerge or pour water into the speaker as product damage will occur.

SPARE PARTS



CUSTOMER SERVICE

Guarantee

Your product has the benefit of our manufacturer's guarantee which starts from the date of purchase.

To activate this guarantee, please return your completed registration card, visit our website or free phone 0800 0731248 within 30 days of purchase (UK only).

Within the guarantee period we will resolve defects in materials or workmanship, free of charge, by repairing or replacing parts or product as we may choose.

This guarantee is in addition to your statutory rights and is subject to the following conditions:

- The guarantee applies solely to the original installation under normal use and to the original purchaser only. The product must be installed and maintained in accordance with the instructions given in this user guide.
- Servicing must only be undertaken by us or our appointed representative. **Note!** if a service visit is required the product must be fully installed and connected to services.
- Repair under this guarantee does not extend the original expiry date. The guarantee on any replacement parts or product ends at the original expiry date.
- For shower fittings or consumable items we reserve the right to supply replacement parts only.

The guarantee does not cover:

- Call out charges for non product faults (such as damage or performance issues arising from incorrect installation, improper use, inappropriate cleaning, lack of maintenance, build up of limescale, frost damage, corrosion, system debris or blocked filters) or where no fault has been found with the product.
- Water or electrical supply, waste and isolation issues.
- Compensation for loss of use of the product or consequential loss of any kind.
- Damage or defects caused if the product is repaired or modified by persons not authorised by us or our appointed representative.
- Routine maintenance or replacement parts to comply with the requirements of the TMV 2 or TMV 3 healthcare schemes.
- Accidental or wilful damage.
- Products purchased ex-showroom display.

What to do if something goes wrong

If your product does not work correctly refer to this manual for fault diagnosis and check that it is installed and commissioned in accordance with our instructions.

If this does not resolve the issue, contact us for help and advice.

Extended Guarantees

A selection of protection plans are available that enable you to cover repair bills (excludes Eire). Ring 01922 471763 for more details.



Helpdesk Service - Ring our Customer Services Team for product advice, to purchase spare parts or accessories or to set up service visit. You can contact us via phone or e-mail, details below. Please provide your model name, power rating (if applicable) and date of purchase.



Mira Showers Website (www.mirashowers.co.uk)

Visit our website to register your guarantee, download user guides, diagnose faults, purchase our full range of accessories and popular spares, or request a service visit.



Spares and Accessories - We hold the largest stocks of genuine Mira spares and accessories. Contact us for a price or visit our website to purchase items from our accessory range and popular spares.



Service/Repairs - No one knows our products better than our nationwide team of Service Technicians. We can carry out service or repair work to your product both during and after the guarantee period. Ask about our fixed price service repairs.

To Contact Us: UK



0844 571 5000



Fax: 01242 282595



E-mail: Visit www.mirashowers.co.uk/contactus



Mira Customer Services Dept, Cromwell Road, Cheltenham, Gloucestershire, GL52 5EP

To Contact Us: Eire Only



01 531 9337



E-mail: CustomerServiceEire@mirashowers.com

Mira is a registered trade mark of Kohler Mira Limited.

The company reserves the right to alter product specifications without notice.

