

Yale H48000-960H DVR

*Also supports H88000-960H

User manual

Please visit www.yale.co.uk for more information

Introduction

Thank you for choosing the Yale H48000-960H DVR recording unit. The unit has been designed to meet the demands of the basic to advanced users.

These are the basic operating and installation instructions and our advanced version is available to download from www.Yale.co.uk or email info@yale.co.uk to receive in the post.

The default settings of the DVR will help cover most basic installation requirements.

Before installing anything we highly recommend to connect the cameras and DVR and test the system.

Display extreme caution when using ladders or steps, please follow manufacturer's instructions. Be careful when using hand and power tools and follow the manufacturer's guidelines when using them. Take care that the correct tools are used. Wear goggles or protective clothing where required.

Contents

Connecting your DVR	2
Basic DVR operation	4
DVR Main Menu in details	8
Controlling Yale Alarm & Smart Lock	26
Connecting your DVR to the internet	28
Guarantee statement	36

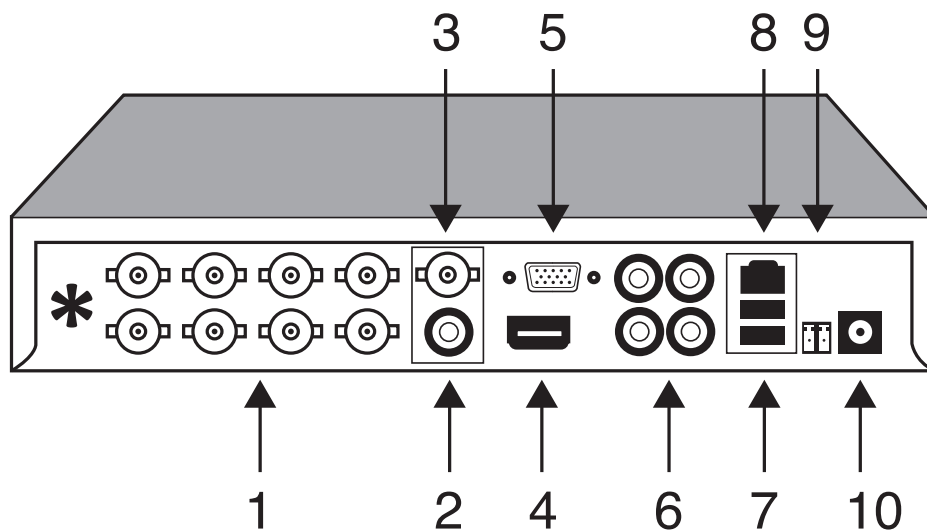
Requirements

A broadband router with one free ethernet port is required. Router must support DHCP and UPnP in order to allow connections.

iOS 7+ or Android 4.1+ required for remote app viewing. Mobile data speed will effect quality and connection.

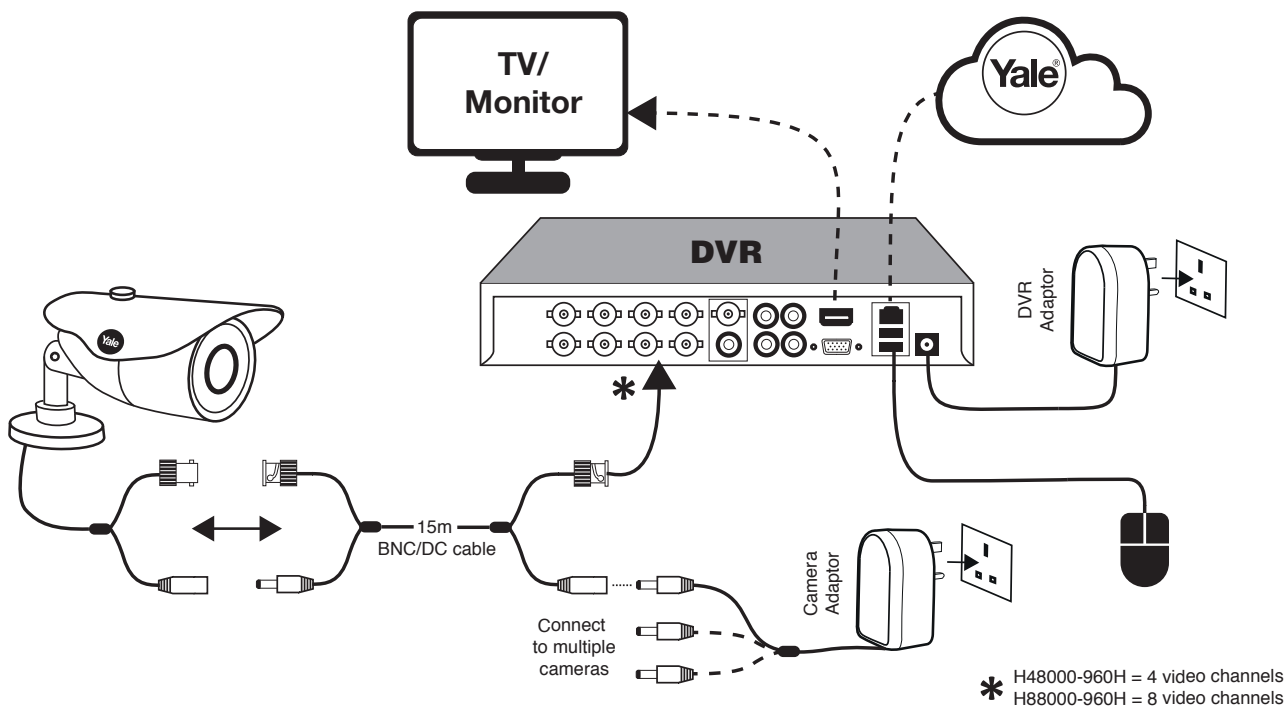
Information and illustrations are subject to change within this document. Yale reserves the right to alter the specification and product design at anytime without notice. Yale® is a registered trademark. © 2014 ASSA ABLOY. All rights reserved.

1 Connecting your DVR



* H48000-960H = 4 video channels
H88000-960H = 8 video channels

- 1. BNC Video Inputs 1 – 4:** These are the video inputs used when connecting your BNC cameras. These are numbered 1 – 4 (or 8 in H88000-960H) as they would appear on the screen of your DVR.
- 2. Audio Output:** A standard line level audio output. You may experience delay in replay time.
- 3. BNC Video Output:** This is for connecting your DVR to a suitable Monitor or TV with BNC or RCA Input.
- 4. HDMI Output:** For connecting a television or PC Monitor with a HDMI cable.
- 5. VGA Output:** For connecting a television or PC Monitor with a VGA cable (not supplied).
- 6. Audio Input:** These will accept a standard in-line audio microphone device.
- 7. USB Ports:** The top port is used for connecting storage devices. The bottom port is for connection of the mouse (supplied).
- 8. Network Port:** You are able to connect the DVR to a network router or switch. This will allow the option of using online features (suitable broadband connection required).
- 9. RS485 controller port:** For use with RS485 supported PTZ camera.
- 10. 12V DC Power input:** This is where you connect the DVR power adapter. DO NOT switch on power until all leads are connected.



Installation guideline

Please ensure the system is fully working prior to installation. Connect all the cameras using the supplied cables and make sure it operates as intended.

Remember the DVR unit is most likely to be left on 24 hours a day, 7 days a week. Please bear this in mind when choosing installation location.

Route the camera cable away from sources of electromagnetic interference, mains cable and heat source.

Please only use the power adaptor supplied.

Install DVR in a well vented area.

DO NOT expose the DVR to moisture or water. Avoid dusty or dirty locations.

DO NOT open the DVR case unless you are requiring exchanging the hard drive.

DO NOT open the case to your DVR whilst your DVR is plugged in and switched on.

DO NOT cut or adjust any cable for any reason.

DO NOT place the DVR in areas where it may experience sudden bumps shocks or movements.

DO NOT apply excessive force to the camera cable during installation. This may damage the cable resulting in loss/ intermittent video signal.

DO NOT apply pressure to the cable connector's neck. This may damage it's internal soldering.

2 Basic DVR operation

The only way to start using your DVR and navigating through the DVR menu's is to connect and use the provided Yale mouse. We have designed the system for mouse friendly operation.

The controls are extremely simple to remember.

Left Click – Selects the item covered by mouse pointer

Right Click – Back or escape function allows you to go back to previous menu or screen

Scroll Wheel – Allows you to flick through the cameras on full screen

Quick Start Menu

When you turn the DVR system for the first time the quick start menu will appear in the centre of the screen. Enable Yale Cloud if you would like remote viewing via internet. Click Next to continue.



You will be presented with a QR code for app registration. You can exit this screen if you are not ready to set-up your app. You can access this QR code by choosing “Quick start” under the right click menu.

*For details on app set-up, please visit www.yale.co.uk under “CCTV” and then “Support”.



You should now have a split screen image of the 4 connected cameras (if no camera is connected you will see a black screen as above)

Main Menu

To access the main menu, right hand click on the USB Mouse. A list of options will appear. Select the top option Main Menu.

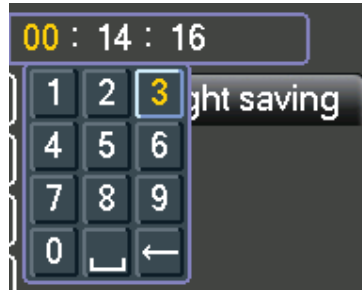


The first thing you will need to do is to set up the time and date on your DVR. Move your connected mouse to the Setting tab. Select the General option



Here you will be able to set the time and date on your DVR system.
Move your mouse over the required section you wish to change and left click.

A keypad will appear allowing you to change the required time or date number.



In the General menu you will also be able to adjust your Time Zone (on support model) and Time Format between 12/24 hour.

The DVR also supports multi language. This can also be changed from the General Menu.

3 DVR Main Menu in details



Under the main menu:

Record: Configure recording schedules, playback/backup old recordings and define video encoding quality.

Detection: Records and alerts when motion is detected, camera lens is obstructed or the camera cable is cut.

Settings: General settings, internet & cloud settings, screen settings, user password settings etc.

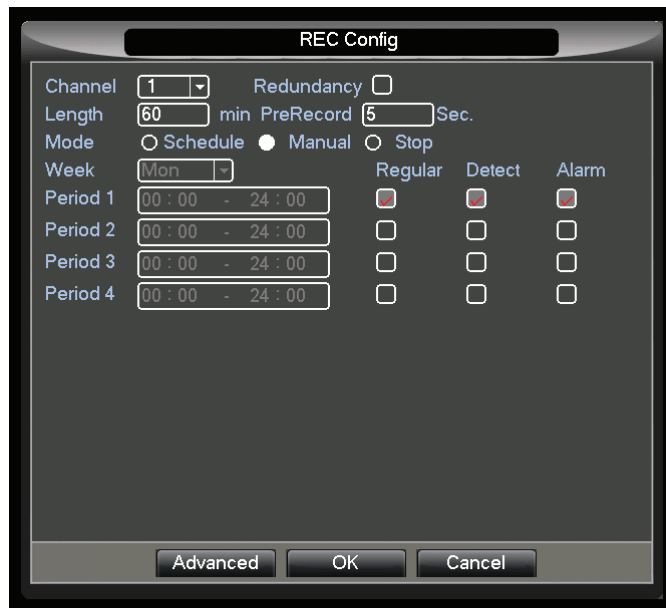
Professional: Advanced settings and professional features

Yale Alarm System: When used with EF-USBDVR (CCTV/Alarm adaptor), this enables control of Yale alarm and lock.

Record

REC Config

Select the Rec Config option. Here you will be able to set your DVR to different recording formats (Schedule, Manual or Stop)



First select the Channel you wish to configure.

Redundancy: recording mirror back up on a second hard drive. Since this model only supports a single drive, this should remain un-selected.

Length: recording clip size. We recommend using the default 60 minutes.

Pre-record: video pre-recording. We recommend using the default 5 seconds.

Select the mode you wish that Channel / Camera to perform.

Schedule – Timed recording or motion detection

Manual – Continuous recording. By default, the oldest recording will be overwritten.

Stop – Do Not record (Only allow you to view live footage and unable to playback)

If you have selected Schedule recording you will then need to day of the week or select all.

You are able to select 4 different time periods throughout the 24 hour period.

By each time period you will need to select regular or detect.

Regular – Continuous Recording

Detect - Motion Detection recording only

Once you have configured this section click the OK button to save your setting. The system is now set-up to record automatically according to your setting. You can view and backup past recording via the Playback option.

Playback

This option allows you to view past recording and to make a backup (onto USB flash drive) as required.



1) Display past recording. Click to select camera for backup operations and double click for full screen view.

2) Play or pause recording playback. Recording must be paused before changing recording dates and cameras.

3) With a camera selected and video playing back, click to start backup of recording. You can click on the time line bar (4) to jump to the end point. Click again to stop recording. Press the hard drive button on the right to backup onto the USB drive (please ensure USB flash drive is plugged in).

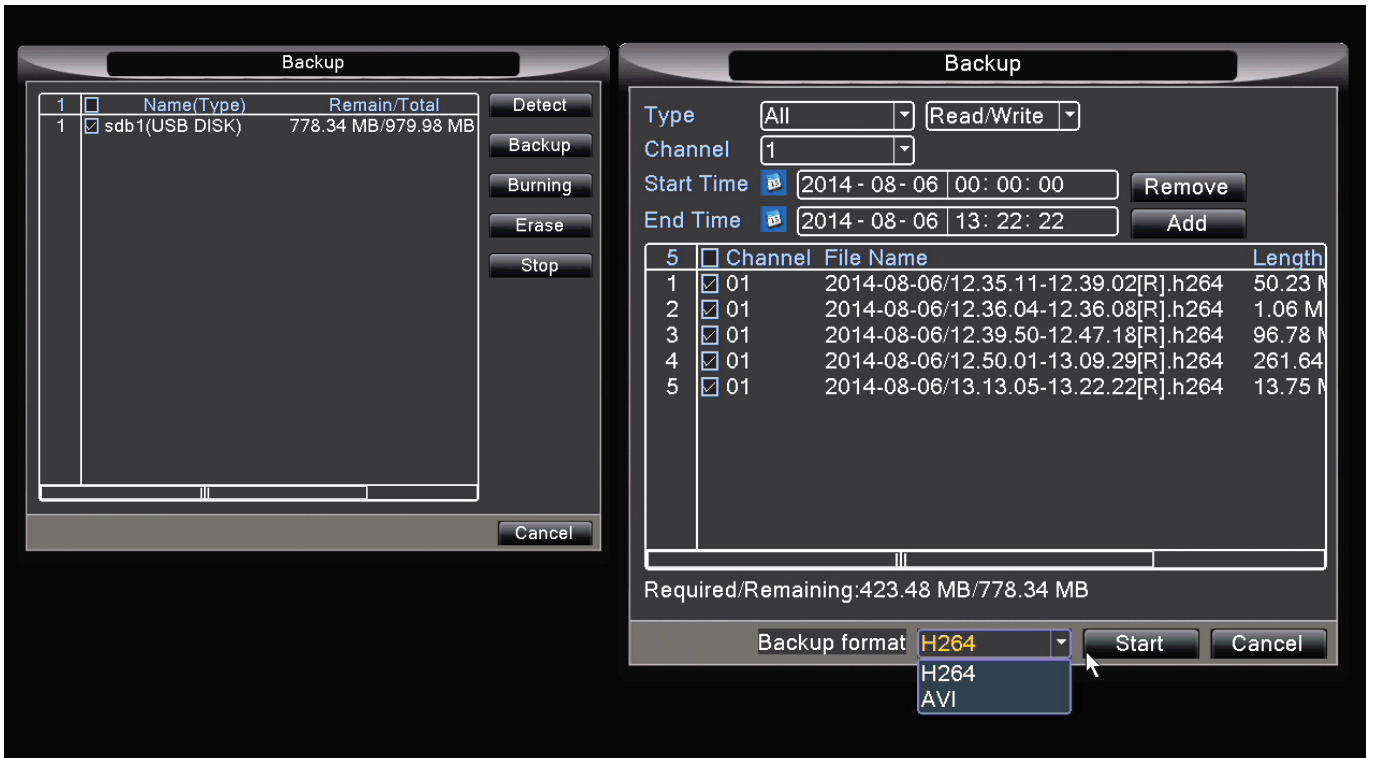
4) This shows the time line of recording. Use the mouse to click on any point to view recorded event. Grey indicates no recording, Green indicates continuous recording and Red indicates recording triggered by motion detection. Use the mouse scroll button to zoom in/out of the time line.

5) Select camera to display. You need to pause playback before you can make such selection.

6) Select date for playback. You need to pause playback before you can make such selection.

Backup

Allow user to backup their video recording onto a USB flash drive



On the back of the DVR is a USB port. Insert a USB flash drive and press the detect button. The USB flash drive will now have been detected and appear within the box (If the pen drive is not detected the DVR will need to be re-started with the USB drive still inserted)

Once the USB drive is detected you will need to click the backup button. It will prompt you to select a clip based on dates for backing up. NOTE: if you wish to view the backup in PC, please select Backup format as AVI instead of H264.

Burning – This function is not available on this model

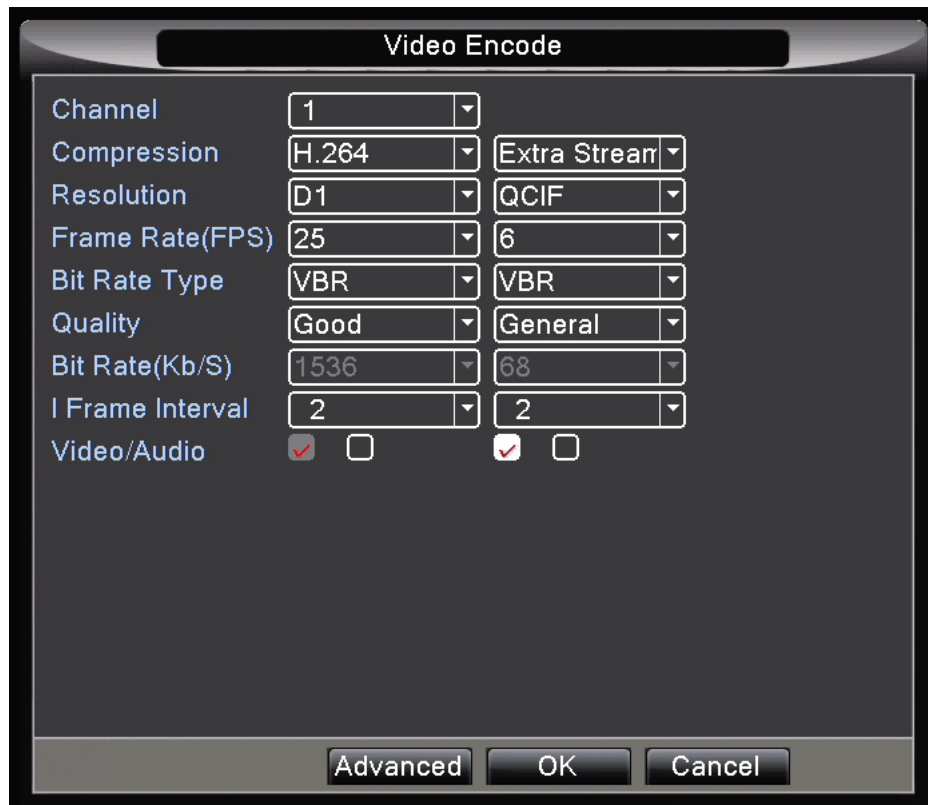
Erase – This will allow you to erase any current files on your USB flash drive

Stop – will stop any ongoing backup process

Please ensure you allow the DVR to complete the backup before removing the USB flash drive, failure to do so could result in the system crashing.

Video encode

Allows user to change the hard drive recording and internet streaming video quality for every camera channel.



Hard drive recording quality (Left column): This effects the DVR recording quality. Higher quality will consume more hard drive space, whilst lower quality will result in longer overall recording time before the hard drive is full.

Internet streaming quality (Right column): This effects the image quality when viewed via internet. Higher quality will result in slower streaming and may cause instability. Lower quality will result in more fluid and stable playback.

Compression: Please use the default settings.

Resolutions: 960H= 960x576, D1= 704x576, HD1= 704x288, CIF= 352 x 288, QCIF= 176x144

Frame Rate: Higher frame rate results in more fluid motions, however it will also take up more space/ bandwidth.

Bit rate type: Unless you have specific reason of using Constant bit rate (CBR), please use the default Variable bit rate (VBR) for optimal results. VBR allows the encoding engine to vary based upon the motion level of the actual recording.

Quality: Better quality will result in taking up more hard drive space and internet bandwidth.

I Frame interval: Number of I Frame in the clip. Higher implies better quality. Please use the default value of 2.

Video/Audio: Tick to enable video (left box) and audio (right box) recording.

Detection

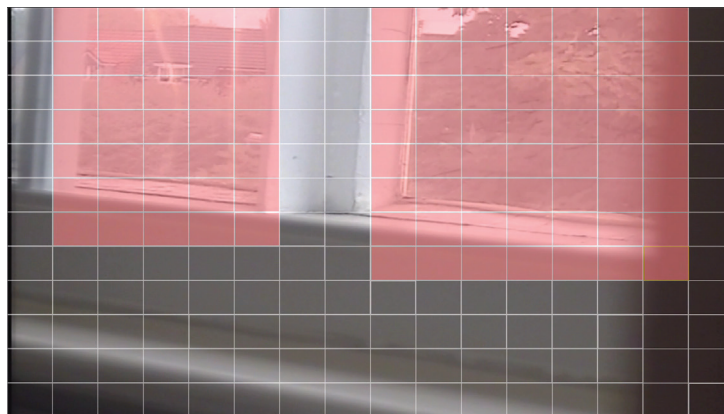
Motion Detect

Here you will be able to set the DVR to active motion recording by setting a region area on the picture. Ideally, focus the motion detection on a doorway, window, gate or driveway.

Firstly you will need to select the camera channel you wish to enable (dropdown menu). Once you have selected the channel you will need to check the ENABLE box. Once you have selected the Channel you want to set, you can set a region you wish to be covered by pressing the SET icon.



Here the Channel you have selected will appear on the screen highlighted in red squares (see below)

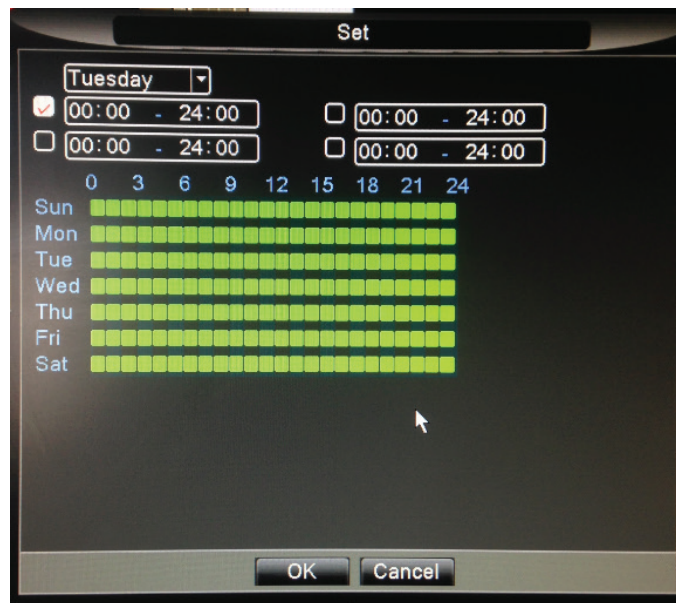


The area which is highlighted in red is the area which will trigger the activation. To focus on a window simply click the left button on the mouse to turn the square clear. By turning these clear this will NOT activate the motion detection function.

Once you have selected the area click the right mouse button to return to the previous screen.

Now you can set the time period you wish this motion activation to take place. Click the SET button next to the PERIOD heading

Here you can select day and time period you wish the system to look for motion detection. The system will be defaulted to 24 hours a day 7 days a week detection.



Click the right button on the mouse to return to the previous menu.

RECORD CHANNEL: is a feature which you could set the DVR to record a number of cameras should 1 channel be activated. Should the motion detection on Channel 1 be activated, you can set the system to start recording cameras on different channels without it needing to be activated, helping to give you maximum coverage.

TOUR: is similar to above but this will record and rotate through the channels selected.

The remaining 4 icons are used for notifying you of the activation

SHOW MESSAGE: This will allow a message to pop up on your screen to indicate activation has taken place

BUZZER: This will activate a buzzer sound on the DVR to indicate activation has taken place

SEND EMAIL: This will instruct the DVR to email you upon activation. Email set up is completed in Settings -> Yale Cloud -> Email option.

FTP UPLOAD: This will allow you to store footage on a different remote location. Set up is completed in Settings-> Yale Cloud -> FTP option.

Covered Lens

This function helps detect any deliberate covering of the cameras lens to prevent recording of the desired image.



Firstly you will need to select the camera channel you wish to enable (dropdown menu). Once you have selected the channel you will need to check the ENABLE box.

Period: Here you can select day and time period you wish the system to look for camera covered detection. The system will be defaulted to 24 hours a day 7 days a week detection.

RECORD CHANNEL: is a feature which you could set the DVR to record a number of cameras should 1 channel be activated. Should the camera covered detection on Channel 1 be activated you can set the system to start recording cameras on different channels without it needing to be activated, helping to give you maximum coverage.

TOUR: is similar to above but this will record and rotate through the channels selected.

The remaining 4 icons are used for notifying you of the activation

SHOW MESSAGE: This will allow a message to pop up on your screen to indicate activation has taken place

BUZZER: This will activate a buzzer sound on the DVR to indicate activation has taken place

SEND EMAIL: This will instruct the DVR to email you upon activation. Email set up is completed in Settings -> Yale Cloud -> Email option.

FTP UPLOAD: This will allow you to store footage on a different remote location. Set up is completed in Settings-> Yale Cloud -> FTP option.

Signal Loss

This function alerts you should any signal loss happen to any camera. This can be caused by cutting the cameras cable, turning off the power supply to the camera or disconnecting from the DVR.



Firstly you will need to select the camera channel you wish to enable (dropdown menu). Once you have selected the channel you will need to check the ENABLE box.

Period: Here you can select day and time period you wish the system to look for signal loss detection. The system will be defaulted to 24 hours a day 7 days a week detection.

RECORD CHANNEL: is a feature which you could set the DVR to record a number of cameras should 1 channel be activated. Should the signal loss detection on Channel 1 be activated you can set the system to start recording cameras on different channels without it needing to be activated, helping to give you maximum coverage.

TOUR: is similar to above but this will record and rotate through the channels selected.

The remaining 4 icons are used for notifying you of the activation

SHOW MESSAGE: This will allow a message to pop up on your screen to indicate activation has taken place

BUZZER: This will activate a buzzer sound on the DVR to indicate activation has taken place

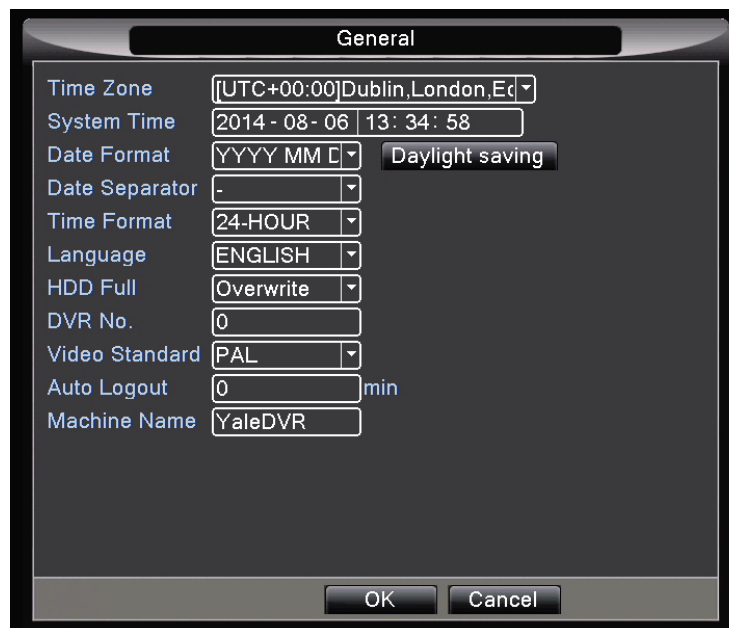
SEND EMAIL: This will instruct the DVR to email you upon activation. Email set up is completed in Settings -> Yale Cloud -> Email option.

FTP UPLOAD: This will allow you to store footage on a different remote location. Set up is completed in Settings-> Yale Cloud -> FTP option.

Settings

General

You will be able to change the systems Time, Date, Language, DVR Name from this menu.



Simply click on the option you wish to change and amend to the desired details you require. Options include:

HDD Full: This allows you to choose if you want the DVR to overwrite the oldest data once the Hard Drive is full or to stop recording.

DVR No: You are able to number each DVR should you have more than 1 DVR on location

Video Standard: Choose between PAL & NTSC

Auto logout: You can enter the amount of minutes the unit can be unused before it locks the screen. Password is then needed to gain access into the menu.

Machine Name: You can name your DVR anything you wish, popular names range from "HOME DVR", "WORK DVR", "OFFICE" and "SHOP".

Local Network

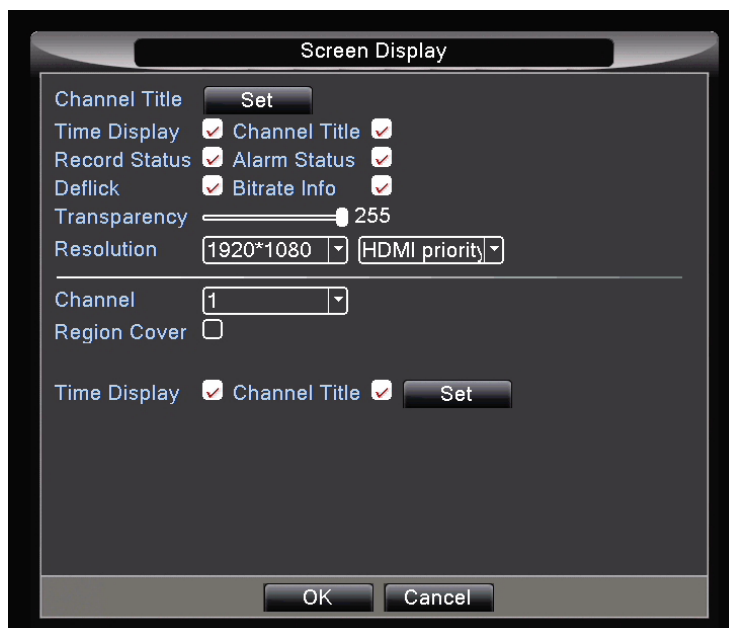
You should not have the need to change this setting unless your network does not support DHCP and required manual network configuration. **See section 5 for further information concerning internet connection.**

Yale Cloud

Tools to set up email, FTP and DDNS. **See section 5 for further information concerning internet connection.**

Screen Display

In this menu you will be able to change display size. Here you will also have the ability to change the display names of the cameras and be able to black out parts of an image for areas you do not wish to record such as moving trees, main roads etc.



Channel Title: Here you can change the name of each camera which is displayed on the screen from your DVR. Click Set to bring up a submenu with camera names (default cam 01, 02, 03 ... etc). Common name changes include GARDEN, DRIVEWAY, FRONTDOOR, SHED, PLAYROOM. Simply Click on the Channel you wish to change the name of and the on-screen keyboard will appear. Once completed click OK and the new details will be saved.

Frame Display: Displays live Time and Date

Channel Title: Name you have given to each camera or the default CAM01, CAM02 etc

Record status: Indicates if the DVR is recording the Channel

Alarm status: Indicates if one of the Detection settings have been activated

Transparency: Change opacity of the menu against the background camera picture.

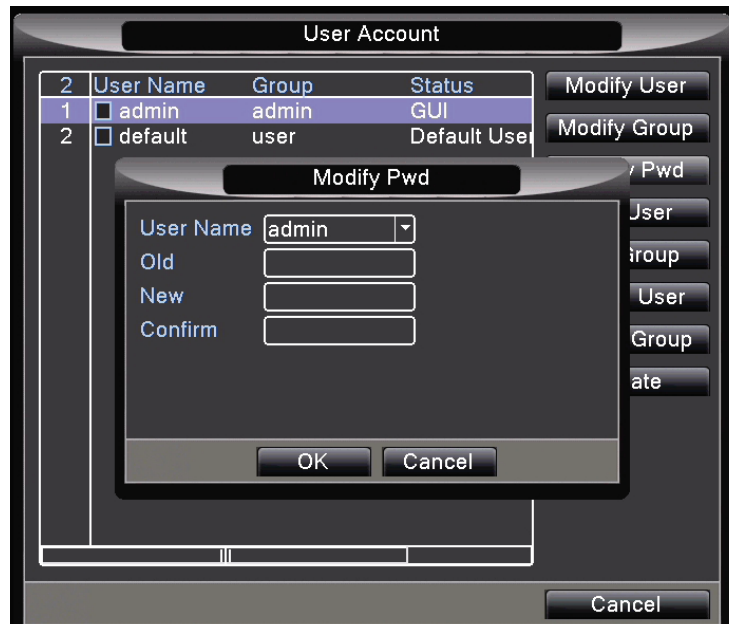
Resolution: Here you can change the display output screen resolution. Please check the resolution supported by your display. Typical HD 1080 TV via HDMI will support 1920x1080 (best resolutions). Connecting via VGA cable to a small PC monitor often means it can only support 1024x768 or 1280x1024.

Region Cover: You can black out areas on screen (for privacy reason). Choose a camera/channel and tick this option. You can now black out a maximum of 4 regions.

Time Display and Channel title positioning: Click set to define positioning of time stamp and title in your camera image.

User Account

You can change your password in this section. You can also add more users with access rights assignment.

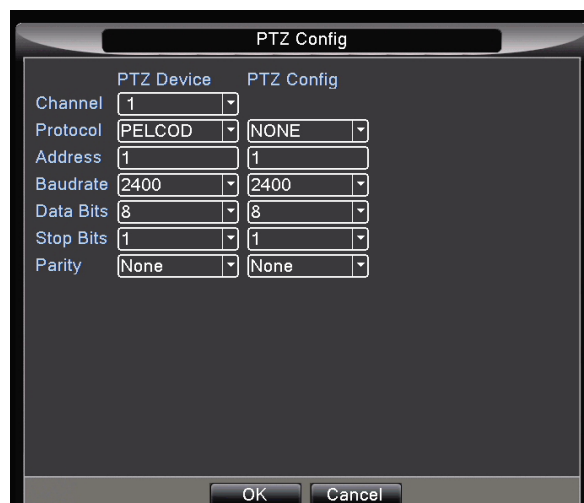


If you would like to connect this DVR to the internet it is critical that a password is setup for your system. Please change the password by clicking Modify Pwd on the right hand side. Leave "Old" as blank (if you have not changed it), and enter the new password.

For power user, you can also create new user groups under this options. Please secure all newly created user groups to ensure security is not compromised.

PTZ Config

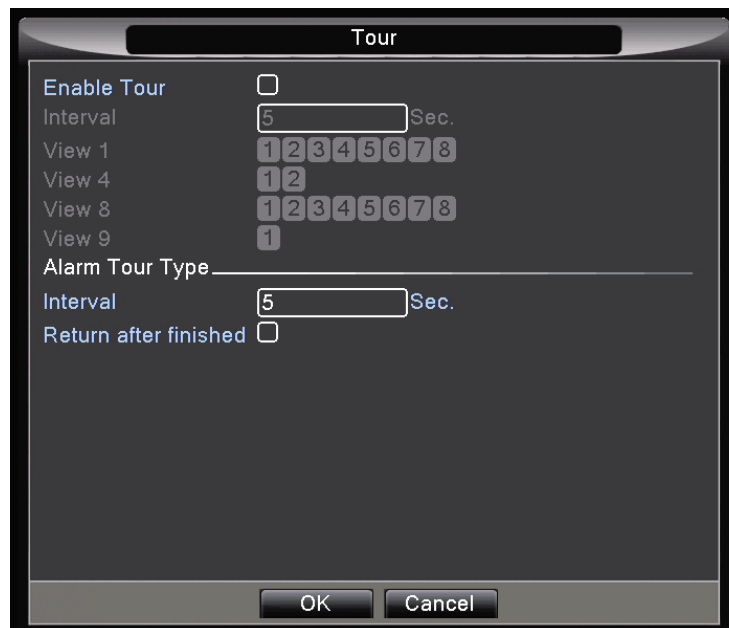
If you use a PTZ camera (with camera communicating cable connected to RS485 port), please set the PTZ parameter to match your camera's specification. Please check with your camera manufacturer for details. The left column is to set-up parameter for the camera, while the right column is to set-up for PTZ controllers.



Tour

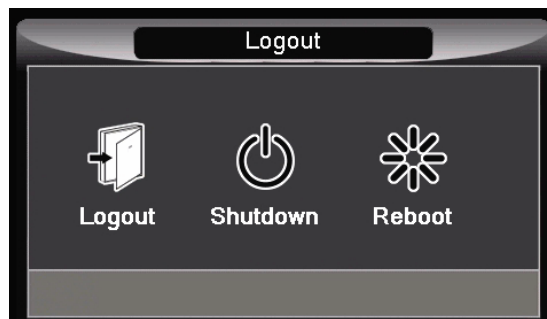
You can set your screen to auto-scroll between different cameras. This is especially useful for guard station. Tick to enable Tour function and set which cameras to view and it's interval. For example, under View 1 (one camera full screen) if you select 1, 3 and 4, for 5 seconds, it will show cam 1 for 5 seconds and move to cam 3 and 4 for 5 seconds each.

Under Alarm Tour type, upon a detection event it will show that camera for the stated interval.



Logout

This option allows you to Logout (require password to access main menu again), Shutdown or Reboot the system.

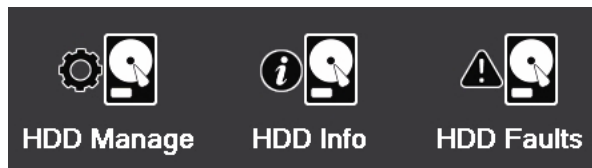


Professional

For typical users, these settings can be left at default.

HDD Manage, Info & Faults

These options allows you to make a drive read only, partition & format your hard drive, see its status and choose what to do in the event of faults.



Bits Per Sec

For those interested in calculating the exact memory space their recording will occupy, this option shows you live bitrate for such calculation. Please note that bitrate will vary depending on the image content (i.e. a busy moving image will be have a higher bitrate than a white static wall)



Online User

This option allows you to see if there is any internet users connected to the system.



Upgrade

This option allows you to upgrade your DVR firmware. Put the firmware file on a FAT format blank USB flash drive (do not place the file in any folders). Insert the drive into the DVR's USB port. Select this option (Upgrade) and it should detect your drive and the file. In the event that it is not detected, close the window and try again. Once the file is located, click the Upgrade button to start upgrading.



WARNING: Do not disrupt this process and ensure the DVR has a continued power supply. When it finishes the system will reboot. The process may take as long as an hour in some cases. Disrupting this process will render this machine permanently inoperable. Please seek professional advice prior to upgrading.

Auto Maintain

This option allows you to periodically reboot your DVR and to delete old files. Rebooting will extend the DVR and its mechanical hard drive's life span. Default is set to reboot every week on Wednesday 3 am.



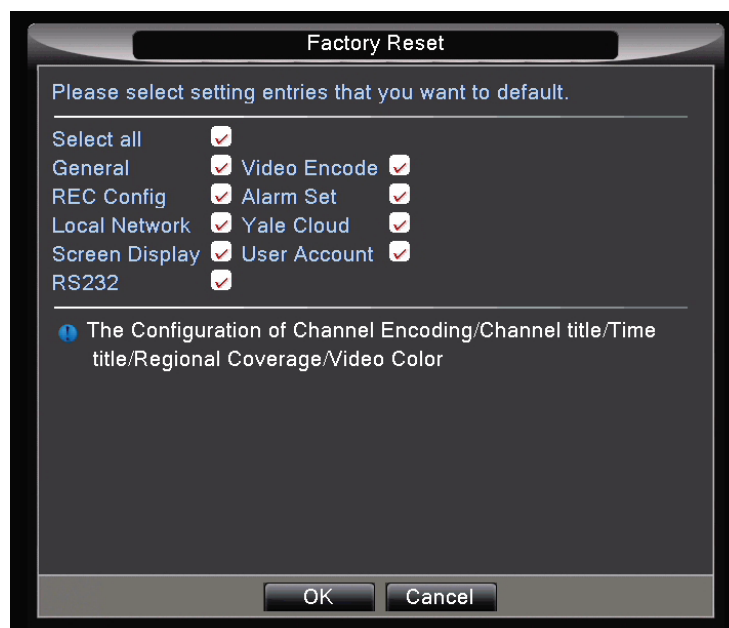
Import/Export

This option allows you to save or load log & DVR configuration onto a USB flash drive.



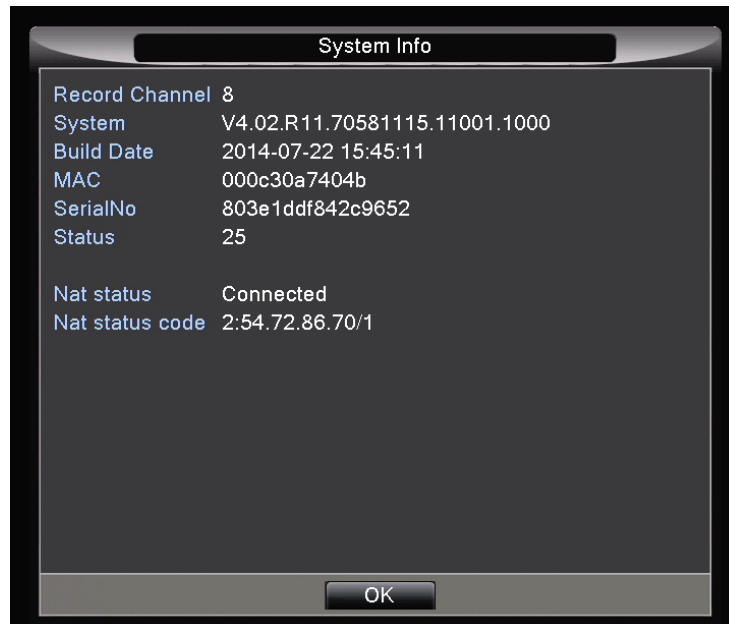
Factory Reset

This option allows you to reset some DVR configurations back to default factory setting.



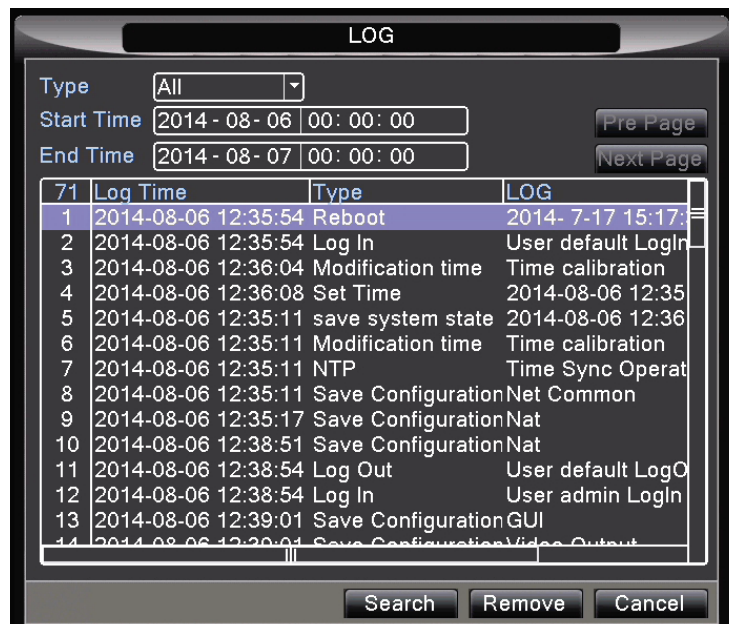
System Info

This information is useful for our customer services in trouble shooting your DVR system.



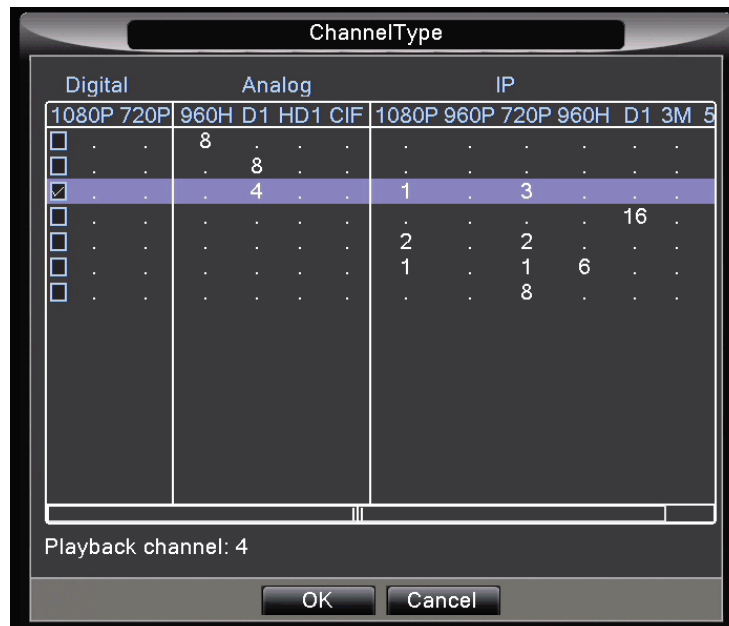
Log

This option allows you to see the historic log of this DVR. It is searchable by date and event type.



DVR/NVR Mode

This DVR is also a NVR that supports ONVIF IP camera. You can configure this NVR to receive/record ONVIF standard IP camera on your local network. To enable the hybrid/NVR function, you must first select a channel type. You can set it to recognise a mixture of analogue BNC cameras with some IP cameras, or you can have it purely receiving IP cameras.



Once you set the system to receive IP cameras, you must locate and manually connect these IP cameras.



4 Controlling Yale Alarm & Smart Lock

By using the USB dongle (model: EF-USBDVR), the user can control their Yale Easy Fit alarm and Yale Smart lock via this DVR system. Compatible with: EF-Kit1, EF-Kit2, EF-Kit3, EF-Kit4, Yale Keyfree lock.

Please ensure you power is off and reboot the DVR after you connect the USB dongle in a spare USB socket (on the rear). The USB dongle is recognised by the DVR automatically. You will now need to pair the USB dongle with your Easy Fit alarm system and Smart Lock. Since this is a wireless interface, you may need to move the DVR/USB dongle closer to the alarm/lock to allow optimal operation.

Pairing with your Easy Fit alarm

Siren based system (EF-kit1, EF-kit4)

You will need to firstly enter learn mode on your system.

Using your alarm keypad:

Press Panic button A followed by the pincode (Indicated by a continuously flashing LED.)
Press Panic button A followed by 2 (The siren will beep in response.)
Press Panic button A followed by 4 . (The siren will beep and flash in response.)
You are now in alarm learn mode.

Press the two buttons (one by one) on the USB dongle to trigger learning-in signals. The USB dongle will transmit keyfob and PIR signals to your alarm system. The siren will beep and flash when each button is pressed.

When both buttons have been learnt in:
Press Panic button A and 5 to quit learn mode.
Press Panic button A and 3 to rearm tamper protection.
Press Disarm twice to exit (The alarm keypad LED will now stop flashing.)

For more information, please refer to your alarm manual section: Adding accessories to an existing system

Telecommunicating alarm system (EF-Kit2)

Using your alarm control panel:

From the programming menu of the control unit, select 'Devices' and press ok, select 'Add Device' and press ok again.

Press the one of two buttons on the USB dongle to trigger learning-in signals. The USB dongle will transmit keyfob signal (button 1) and PIR signal (button 2) to your alarm system. After each press, you will need to confirm your selection on the alarm panel before moving onto the next button.

When both buttons have been learnt in, exit programming menu and back to standby mode.

For more information, please refer to your alarm manual section: Adding and using accessories

SmartPhone alarm system (EF-Kit3)

Press and hold the learn button (on the rear of the alarm panel) for at least 3 seconds. Led 1 will now flash and beep to indicate that you have entered learn mode.

Press the two buttons (one by one) on the USB dongle to trigger learning-in signals. The USB dongle will transmit keyfob signal (button 1) and PIR signal (button 2) to your alarm system. The siren will beep and flash when each button is pressed.

When both buttons have been learnt in, press and hold the alarm panel learn button for at least 3 seconds. The LED should now stop flashing and entered standby mode.

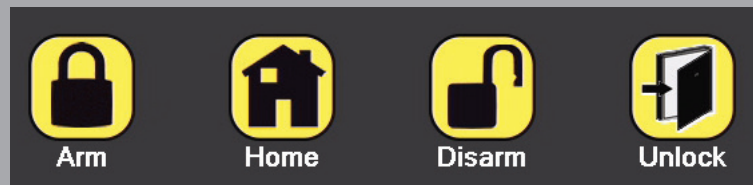
For more information, please refer to your alarm manual section: Adding and using accessories

Pairing with your Yale Smart Lock

Note: Please check with your lock installer that the lock is fitted with the correct module for this USB dongle.

Press the "i" button on your Smart lock. The lock is now in learn mode. Press and hold the USB dongle DDL button for at least 5 seconds. The lock will beep to confirm successful learnt-in. Press the "i" button to exit learn mode.

Operation



Arm: Press the arm button on the DVR or mobile app. The alarm will now enter Full arm mode.

Home Arm: Press the home arm button on the DVR or mobile app. The alarm will now enter Home arm mode.

Disarm: Press the disarm button on the DVR or mobile app. The alarm will now be disarmed.

Door Unlock: Press the unlock button on the DVR or mobile app. The lock will now open.

Intelligent: Please ignore. This is a reserved function for future software updates.

Camera signal loss: With Signal Loss option (Main menu -> Detection -> Signal Loss) enabled, disconnection of camera cable will trigger alarm during arm mode.

5 Connecting your DVR to the internet

In order to connect your Yale DVR to the internet for remote internet viewing, you will need the following:

Home Network environment:

- You will need a fixed-line broadband router with fast internet access (ideally 10Mbps+).
- The router needs to have at least one spare wired network socket (connecting to the Yale DVR).
- Access to the local administration screen on your router. This allows trouble shooting in the event of issues related to firewall and port settings. Please ask your router manufacturer for more information.
- Most home network uses dynamic IP addresses. Performance will improve if the network uses Static IP address (some ISP provides this as an option).
- If you use the default automatic setting (auto-connection to the Yale Cloud), your router's DHCP must be enabled.

Please note: This DVR may not perform optimally in some corporate environments. Large company network normally uses Symmetric NAT and this will degrade the connectivity, speed and performance of certain remote operations.

Remote viewing via smart phone:

- Please search and download "Yale Easy Fit DVR" app from iOS iPhone app store and Google Play store.
- Compatible with iOS 7+ and Android 4.1+
- Minimum recommended resolution 600 x 900
- For optimal performance, your mobile phone need to have fast internet access (at least 3G+ with good signal strength). Due to many mobile phone operators adopting CGN (carrier grade NAT), you may find that your connection works much faster when you are connected to a home WiFi network. This is because CGN uses Symmetric NAT and sometimes resulted in reduced performance

Remote viewing via Internet Explorer browser:

- PC with broadband internet
- Internet Explorer 10 or above
- Requires unsigned active-X enabled (you can also download the active X software from our website)

Local network viewing via Internet explorer browser:

- PC with connection to the same local network (as the DVR)
- Internet Explorer 10 or above
- Requires unsigned active-X enabled (you can also download the active X software from our website)

Choosing a method for connecting to the internet.

There are two ways to connect your DVR to the internet, either via Port forwarding or using the Yale cloud server. For ease of use, we have enabled Yale cloud as the default connection method. However due to superior reliability and performance, we would recommend using Port forwarding for technically adept users.

Problem with NAT traversal

Yale cloud relies on NAT traversal to gain access to your DVR from the outside. While in many cases it works perfectly, this technology's limitation also means some network environment may fail or suffer performance issues. This is to do with the type of NAT (network address translation) implemented by your network.

Most home networks use Full cone, Restricted cone and Port restricted cone NAT. These three types of NAT will work with our NAT traversal method. However any network that uses symmetric NAT (i.e. Corporate network and CGN 3G/4G phone network) may experience connection related issues. This limitation applies to both the DVR network environment as well as the remote viewing network environment (i.e. Your mobile phone).

Ideal operation environment for Yale cloud is when the DVR is connected to a full cone home network environment, and the remote viewing phone is connected via Wi-Fi to a full cone home network.

1) Set-up using Port forwarding method

This is the most reliable method for internet access. For the ultimate speed and reliability we advise users to use static IP address. Not all internet service providers (ISP) provide static IP address, and the user will be expected to pay a small monthly fee for such service- please check with your provider accordingly. Alternatively our DVR support a number of Paid and free DDNS service should you be using Dynamic IP address.

Static Vs. Dynamic IP address

IP address is similar to your physical postal address; it acts as your unique contact ID when you are communicating with the wider world. In the ideal world, every home will have its own unique and permanent address, i.e. Static IP address. However due to a shortage of IP address range (V4), it may not be practical to assign a unique and globally accessible IP address to each customer that is connected to the internet. Internet service providers usually own a range of static IP addresses, and it will dynamically assign these addresses to online users. Once the user is offline, this static IP address is randomly given to another online users and reused in this way. This is known as dynamic IP address. The main problem with dynamic IP address comes when you try to access your machine remotely. Since your IP address may have randomly changed since you last noted, you do not have the up-to-date address to access your system. One way to resolve that is by using a DDNS service. It acts like a PO box service, and you can configure your machine to automatically inform this central server of any changes to your dynamic IP address. By accessing your DDNS service using a URL handle, you will be automatically diverted to the correct IP address of your machine.

Setting up port forwarding if your router supports UPNP:

- 1) Please ensure your router UPNP option is enabled. Please check with your router manufacturer on how to do this.
- 2) Enable UPNP on your DVR: Menu -> Settings -> Yale Cloud -> UPnP (enable)

Manual port forwarding:

Difference router manufacturer may name this setting differently. Some may call it Game and Application sharing, while others may refer to it as Port forwarding etc. Please check with your router manufacturer

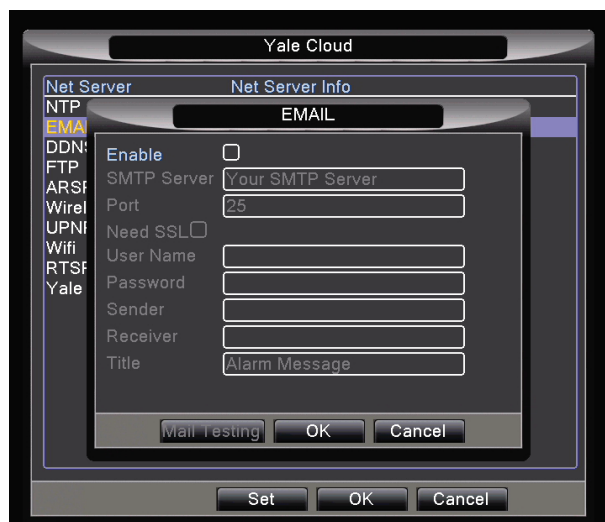
on how to do this. You will need to enable TCP/UDP port forwarding of the two ports, 80 and 34567. This means whenever you try to access your router from the outside, any call to the port 80 and 34567 will be automatically forwarded to your DVR.

Setting up DDNS for dynamic IP address:

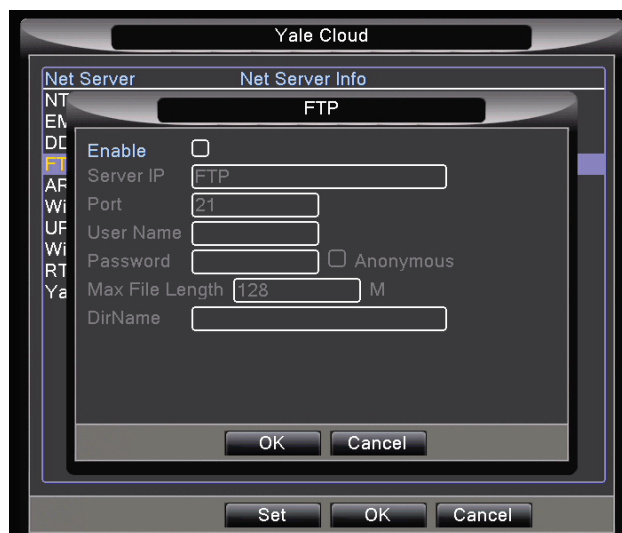
Should you have a static IP address, you can simply access your DVR using this information. For the majority of users out there, it is likely that you have dynamic IP address and need to set-up DDNS in order to access the system remotely. You can either do this on your router (please check with router manufacturer) or on our DVR. Please go to the option: Menu -> Settings -> Yale Cloud -> DDNS. Please choose one of the supported DDNS service. You will need to register with this DDNS service before it can be used. Some of these DDNS requires a yearly fee. We will extend the list of supported DDNS in our future firmware updates.

2) Setting up email alert and FTP upload

Go to menu -> Settings -> Yale Cloud and select email and FTP option. Setting up email alert upon motion triggers. You will need to know your email's SMTP server and other account information. SSL supported. Please ask your email provider for the required information.



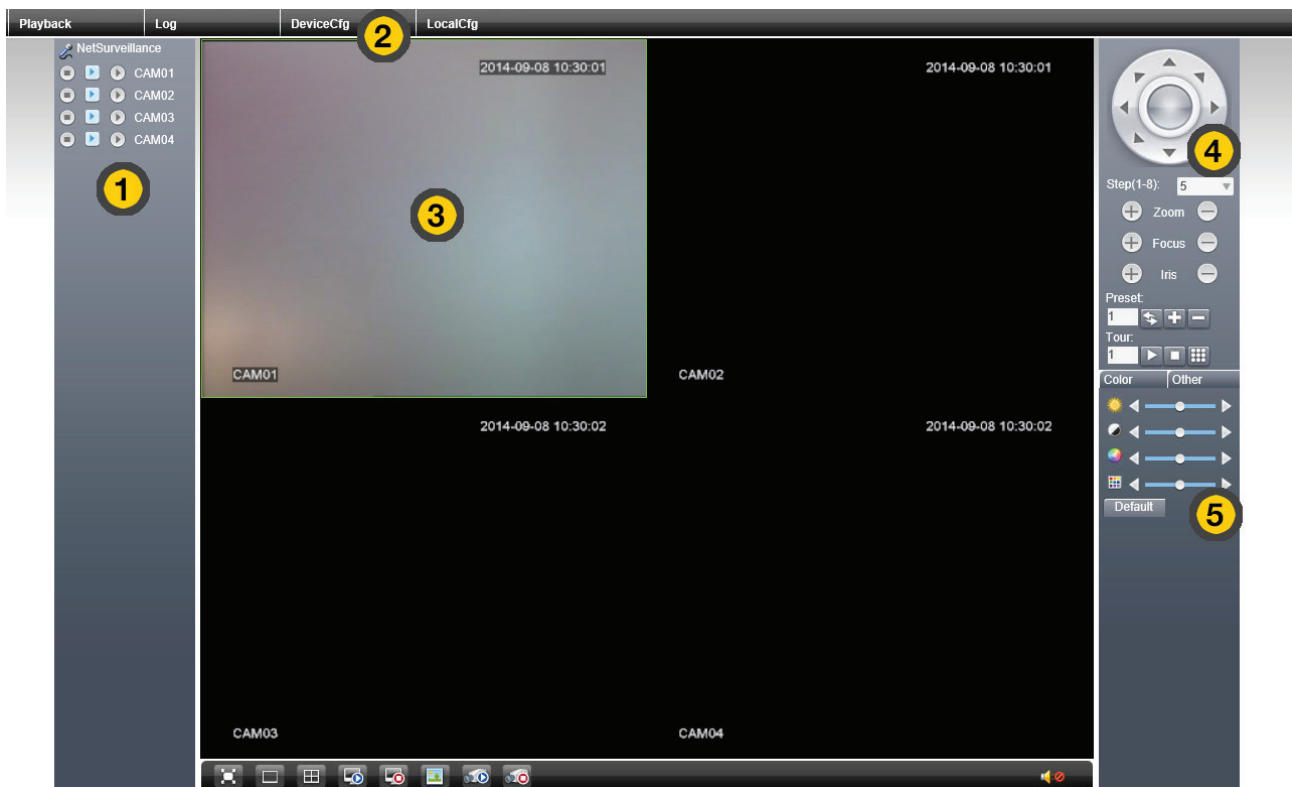
Setting up FTP to upload video motion recordings to a remote location. You will need to know your FTP server IP and FTP account information. Please ask your FTP provider for the required information.



3) Remote viewing via internet explorer web browser

You will need to download & install the active X software from our website www.yale.co.uk (under CCTV) before you can run our software on your web browser.

Enter the IP address <http://54.76.132.77> on an internet explorer browser (It does not work in Safari, Chrome or Firefox). It may prompt you to accept Active X and you need to click accept to proceed. You will now see a black login screen. Enter your DVR serial number (it can be found in Main menu -> Professional -> System Info -> Serial no), user name, password and verification code to login. **This serial number is not the number found on the sticker at the bottom of the DVR.**

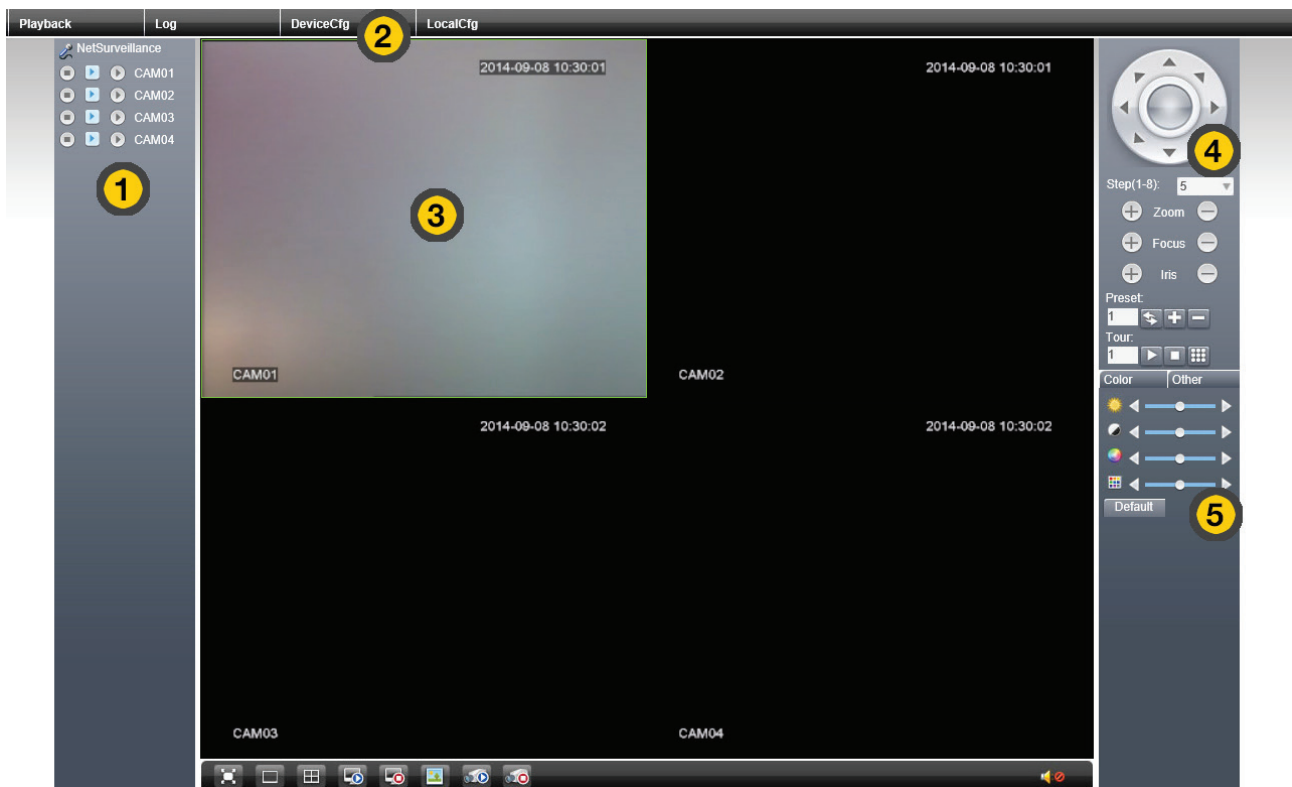


- 1) Play back camera using main stream or extra stream (lower quality)
- 2) Open up DVR Main Menu option.
- 3) Select camera for operation, or double click for full screen.
- 4) PTZ function if PTZ camera is present and supported.
- 5) On-screen colour correction.

4) Local viewing via internet explorer web browser

You will need to download & install the active X software from our website www.yale.co.uk (under CCTV) before you can run our software on your web browser.

Find your DVR IP address by going to Main Menu -> Settings -> Local Network -> IP address. Enter this IP address on an internet explorer browser (It does not work in Safari, Chrome or Firefox). It may prompt you to accept Active X and you need to click accept to proceed. You will now see a black login screen. Enter your user name and password to login.



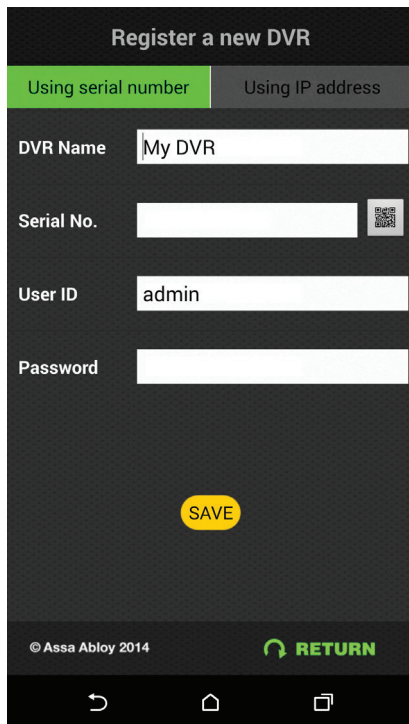
- 1) Play back camera using main stream or extra stream (lower quality)
- 2) Open up DVR Main Menu option.
- 3) Select camera for operation, or double click for full screen.
- 4) PTZ function if PTZ camera is present and supported.
- 5) On-screen colour correction.

5) Remote viewing via Mobile phone app

You can view your DVR remotely using the Yale CCTV app. Please download this app from the iOS app store and Google Play store. Search "Yale CCTV". Please make sure you have fast mobile internet connection, and preferably Wi-Fi connection to ensure the app runs smoothly. Upon launching the app:

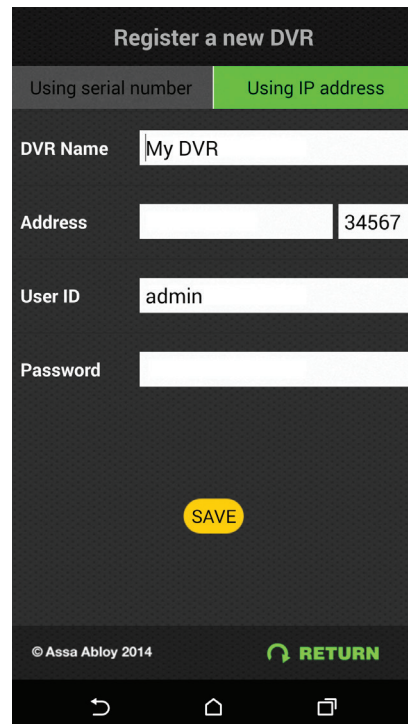
No DVR registered:

-Using Serial number (QR code)



Please name your DVR, followed by pressing the QR code icon (on the right side of Serial No.). This will open up a scanner for you to scan the QR code on your DVR screen (see page 4). Enter your User name (default=admin) and password. Please ensure you set up a password on your DVR. Press Save once finished.

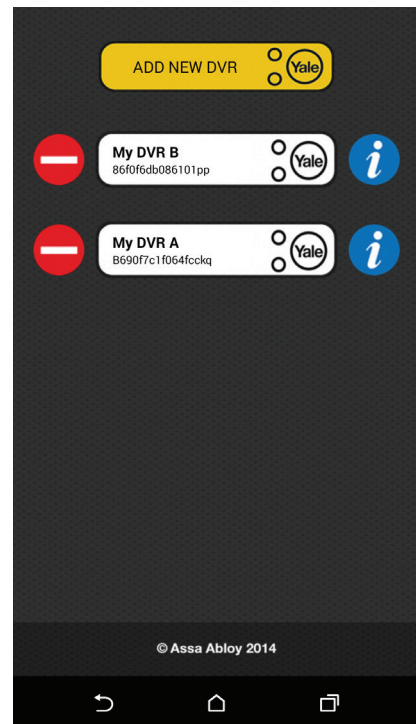
-Using IP address (port forward)



Please name your DVR, followed by entering your static IP or URL from your DDNS server. Enter your User name (default=admin) and password. Please ensure you set up a password on your DVR. Press Save once finished.

Already registered:

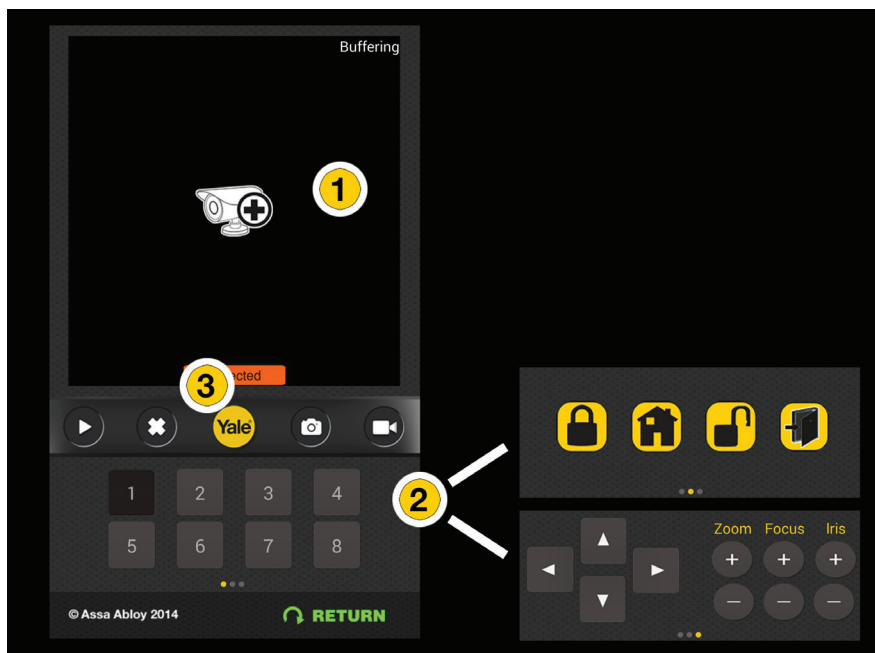
-Select an existing DVR to view



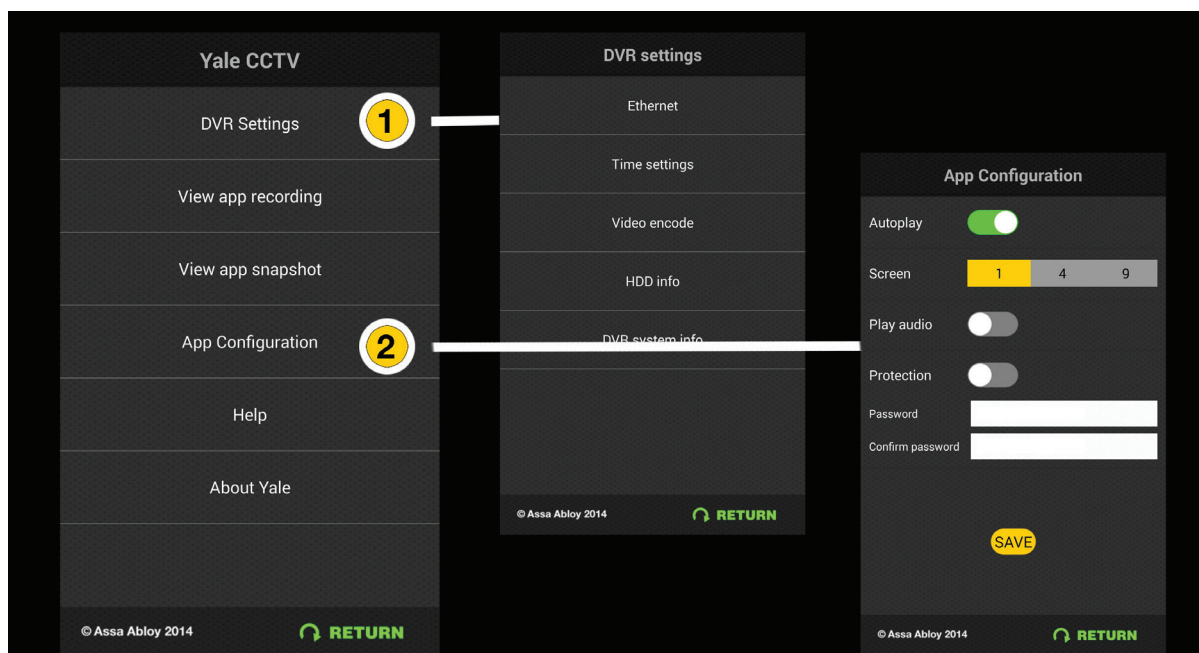
Choose one of the existing DVR to connect or you can add a new DVR. You can also delete and edit your registered DVR.

You will now see the main console screen showing the first camera. If you use QR code for connection, the image may take more than 10 seconds to load up. Connecting via IP address and DDNS URL will be faster.

If the DVR failed to load or the camera cannot be connected, please restart the app or press the camera icon within the picture frame to reload. Please also check and ensure your DVR is connected to the internet.



- 1) Press and drag left or right (anywhere within the picture frame) to scroll between cameras.
- 2) Press an drag left or right (start from the edge of the phone's screen) to scroll between channels, Yale Alarm control (for use with USB link adaptor) and Pan-tilt-zoom camera control (optional).
- 3) Press the Yale logo to access the menu system.



- 1) "DVR Settings" allows you to remotely configure some of the DVR settings.
- 2) "App Configuration" changes the local app behaviour. You can set the app to display 4 cameras at the same time (may require faster internet connections).

ASSA ABLOY Ltd.
School Street, Willenhall
West Midlands
England, WV13 3PW

Declaration of Conformity

We: ASSA ABLOY Ltd.
School Street
Willenhall
West Midlands
England
WV13 3PW

declare under our sole responsibility that the following product(s):

Model: D46000-D1
H48000-960H
H88000-960H
SCD-70B20B
SCH-70D20A
SCH-85B40B
AC-100W
AC-101W

is (are) in conformity with the following CE and RoHS standards:

EN55022:2006+A1: 2007+A2: 2010;	EN61000-4-5:2006;
EN55024:2010	EN61000-4-6:2014;
EN50130-4:2011;	EN61000-4-8:2010;
EN61000-3-2:2006+A1:2009+A2:2009;	EN61000-4-11:2004;
EN61000-3-3: 2008;	EN60950-1:2006+A11:2009+A1:2010+A12:2011
EN61000-4-2: 2009;	2011/65/EU (RoHS)
EN61000-4-3:2006+A1:2008+A2:2010	2006/66/EC (RoHS)
EN61000-4-4:2012;	IEC 62321:2008 (RoHS)

Name: John Ward

Position: Director

Signature: 

Date: 29/05/2014

On behalf of ASSA ABLOY Ltd.



2 Year Guarantee Statement

This product is guaranteed for consumers against faulty workmanship, materials and function for a period of 2 years from the date of purchase providing the full installation and maintenance instructions are followed. Please keep your proof of purchase safe, this must be submitted when making a claim under this guarantee.

Please note that it is a condition of this guarantee that your Yale product:

- Has been correctly installed and maintained in accordance with the Yale installation and maintenance instructions provided to you at the time of purchase.
- Has not been modified or damaged in any way.
- Has not been subjected to unauthorized repairs.

Yale are responsible under this guarantee for repairing the product or replacing the product as we deem necessary. If there is fault with the product, please contact Customer Services on 01902 364647, who will give you the name of an expert and confirm what you need to do to make a claim under this guarantee.

Please do not carry out any repairs without our authority or by using an unauthorised expert. Any repairs or other works carried out without our authorization or by using an unauthorized expert will not be covered under this guarantee.

This guarantee is non transferrable and applies to products purchased in the United Kingdom only. This guarantee does not apply to normal wear and tear. This does not affect your statutory rights. A full copy of this guarantee is available upon request by writing to Yale UK, School Street, Willenhall, West Midlands. WV13 3PW or by visiting our website www.yale.co.uk.

The remote viewing feature requires our central server. Yale offers no guarantee on the availability of our free server. We would contact individual users via email should this situation change.

In the unlikely event of server disconnection, the DVR will continue to function via local HDD recording.



WEEE

Note: Waste electrical products and batteries should not be disposed of with household waste. Please recycle where facilities exist. Check with your local authority or retailer for recycling advice.



E3 09\14

THE YALE BRAND, with its unparalleled global reach and range of products, reassures more people in more countries than any other consumer locking solution.

THE ASSA ABLOY GROUP is the world's leading manufacturer and supplier of locking solutions, dedicated to satisfying end-user needs for security, safety and convenience.