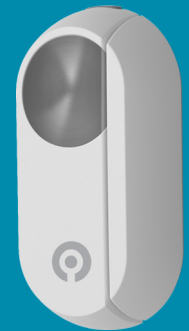




Quick Start Guide

EN

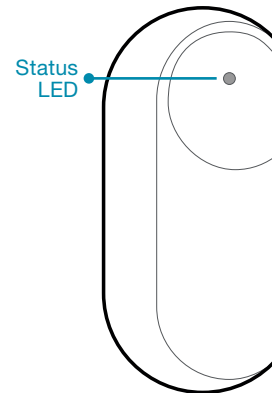


Read me first

Window / Door Sensor

At a Glance

Thank you for choosing the SwannOne™ Window/Door Sensor. The SwannOne Window/Door Sensor monitors the opening and closing of doors and windows, notifying you when changes occur via the SwannOne system.



Sensor



Magnet



3M Command™ Mounting Strips

Compliance Information

FCC Statement

This device complies with part 15 of the FCC Rules. Operation is subject to the following two conditions: (1) This device may not cause harmful interference, and (2) This device must accept any interference received, including interference that may cause undesired operation.

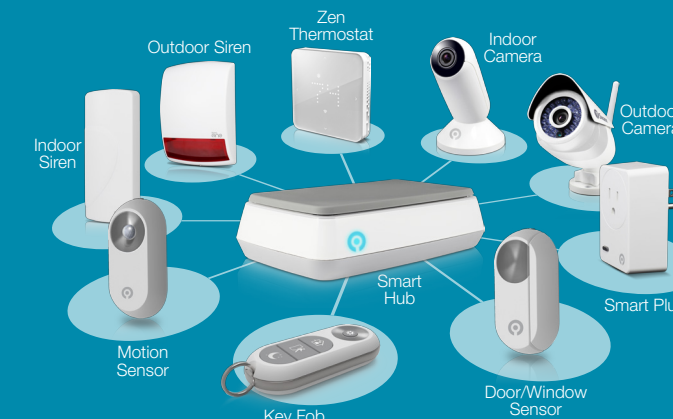
Disposal and Recycling Information

Correct Disposal of this product. This marking indicated that this product should not be disposed with other household wastes throughout the EU. To prevent possible harm to the environment or human health from uncontrolled waste disposal, recycle it responsibly to promote the sustainable reuse of material resources. To return your used device, please use the return and collection systems or contact the retailer where the product was purchased. They can take this product for environment safe recycling.

Battery Safety Information

CAUTION: RISK OF EXPLOSION IF BATTERY IS REPLACED BY AN INCORRECT TYPE. DISPOSE OF USED BATTERIES ACCORDING TO THE INSTRUCTIONS.

Discover More SwannOne Smart Home Solutions



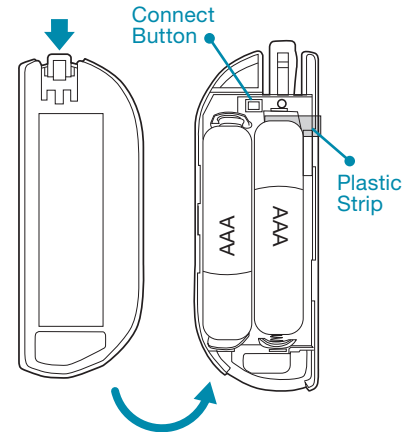
www.swannone.com

© Swann Communications 2015

QSGWS271114E

Activate

- 1 Open the sensor by pushing back the release catch on top. The front panel should come off easily.
- 2 Remove the protective plastic strip to engage the battery and activate the sensor.

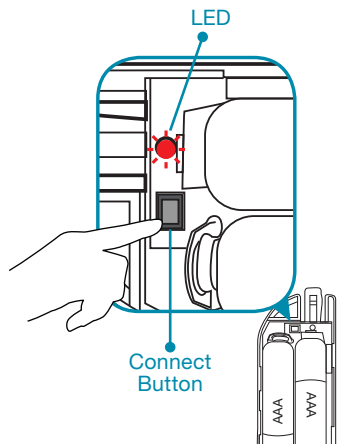


Pair & Register

- 1 Log in to your SwannOne web dashboard at home.swannone.com.
- 2 Select **My Devices**, and select **add new** from the Entry Sensors menu.
- 3 Select **Start Learn**.
- 4 Press the **Connect** button on the sensor. The LED blinks once. Once your sensor connects with your hub, the LED will blink twice. The on-screen "**Entry Sensors currently registered**" counter will increment by 1.
- 5 Select **Stop Learn**, and complete the rest of the setup by following the on-screen instructions. Once complete, put the front panel back onto the sensor until it clicks into place.



If the sensor is not connecting as expected, try performing a hard reset by pressing and holding the **Connect** button until the status LED blinks rapidly.

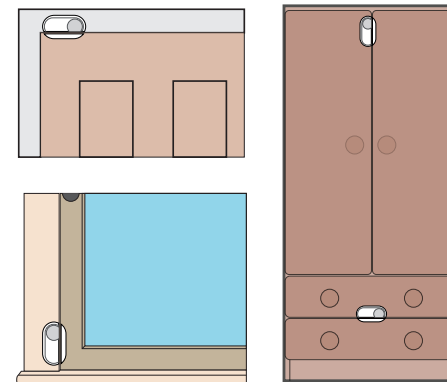


Mount



Take time to choose the location and test orientation of the sensor and magnet. The sensor and magnet should ideally be positioned in a way that when the window/door is closed, they are aligned side by side, within $\frac{5}{16}$ " from each other.

- 1 Before applying Command™ Strips, clean the surface where the sensor and magnet will be mounted, and make sure it is dry.
- 2 Fit the sensor and magnet with appropriate sized strips, and then press the sensor and magnet firmly onto surface for 30 seconds.
- 3 Test the sensor by opening and closing the window/door. The Status LED blinks whenever movement is detected. You should also receive a status alert via the SwannOne web dashboard and app on your smartphone.



Placement Examples

Need Help?

Get more information regarding the setup and use of your product on the web at swannone.com, or contact our multi-lingual support team anytime via:



USA & Canada	1800 627 2799
UK & Europe	0808 168 9031
Australia	1300 138 324
New Zealand	0400 479 266



support@swannone.com

SwannOne Warranty

Your SwannOne products are backed by a full 12 month guarantee from the date of purchase. In the unlikely event of anything going wrong, you can have confidence that your purchase is protected. Refer to swannone.com for terms and conditions.

Window/Door Sensor

Detects open status of windows/doors & senses temperature, notifying you when changes occur via the SwannOneTM System

DETECT ENTRY

Detects open & closed status, with magnetic sensor on either side of door & window frames

ALARM TRIGGERS

If the magnetic sensor is disrupted an audible alarm can be triggered[^] & an alert is sent to your Smartphone

TEMPERATURE INDICATION

Measures & reports on the room temperature in your home

EASY SET UP

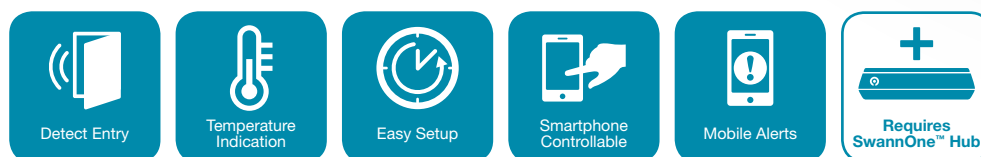
Fitted with a 3M CommandTM strip & uses 2 x AAA batteries (included) to enable easy installation & relocation. No drilling, no holes!

MOBILE ALERTS

Receive alerts & status updates on your Smartphone when paired with a SwannOneTM Smart Hub



[^] Requires purchase of SwannOneTM Smart Hub, Indoor &/or Outdoor Siren

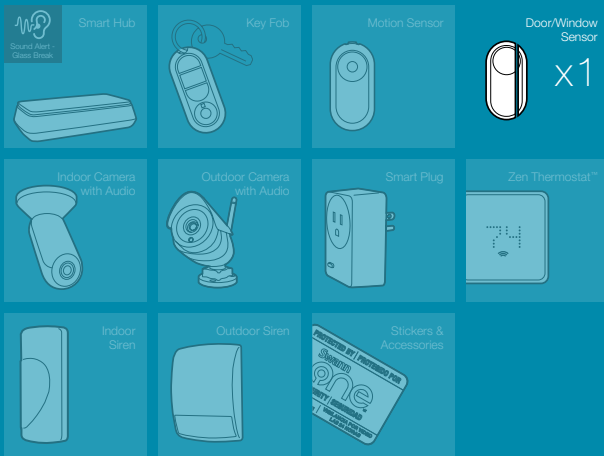


Compatible with



In the box

SwannOne™ Window/Door Sensor
 Batteries AAA x 2
 Quick Start Guide



Technical Specifications

Dimensions	3.15 x 1.65 x 0.79" / 80 x 42 x 20mm
Weight	1.6oz / 45g
Batteries	AAA x 2
Indoor/Outdoor	Indoor

System Requirements

Internet Connection	High-Speed
Wireless Network	Wi-Fi b/g/n
Internet Browsers	Internet Explorer 9+, Firefox, Safari 7+, Chrome
Compatible Devices	iPhone, iPad, iPod Touch, Android devices, PC & Mac computers
Operating Systems	iOS 7 & later, Android 4.0 & later, Microsoft® Windows® 7 & later, Mac OS 10.7 & later

The SwannOne App

The SwannOne app in conjunction with the Smart Hub brings your SwannOne Smart Home to life, allowing you to monitor & control your system from anywhere. As the environment changes and technology advances, your SwannOne system will continually be developed and enhanced and you will from time to time receive software updates which will allow you to get even more out of your SwannOne Smart Home.



Customize right mix of devices



Customizable to your needs
 SwannOne grows with you. If you decide to move, it can easily move with you. If your needs change – a bigger home or the addition of a holiday home perhaps, you can scale up your system with a wide range of accessories available.

Requires browser interface for setup

24/7 Support

With SwannOne™ you really are in control & we'll be right there with you. Our multilingual support team are here to answer any questions you may have, no matter how simple or complex, 24/7. That's our promise.

For more information about SwannOne visit:
swannone.com