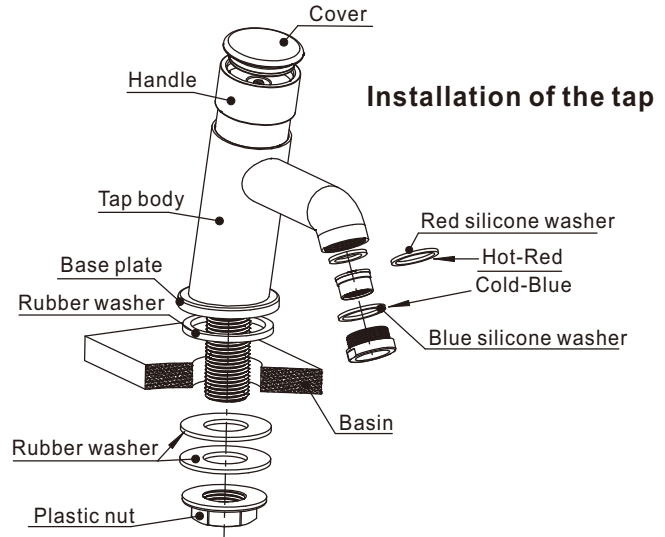
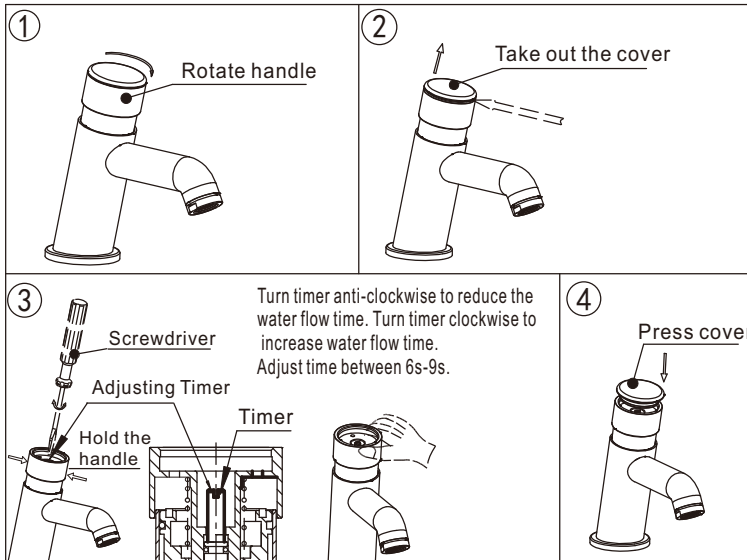


Installation and Maintenance instruction

Technical Information:

- Flow Rate: 0.14L/S in 10 Sec / 2 Bar
- Max. Working Pressure: 6 Bar
- Min. Working Pressure: 0.3 Bar
(Recommended working pressure 0.5bar).
- Cut Off Time : 4-13 Sec / 2Bar
- Max Working Temperature: 60 degrees Celcius between Max. and Min. working pressure.

Note : Follow below steps to adjust shut off time.



Installation of the tap

Follow the steps below for regular cleaning or maintenance !

