

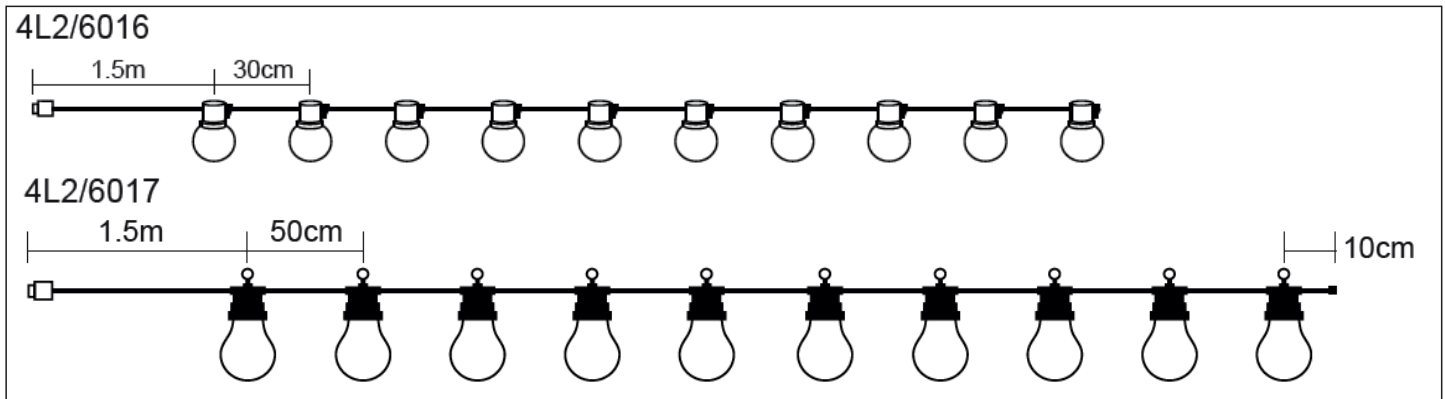
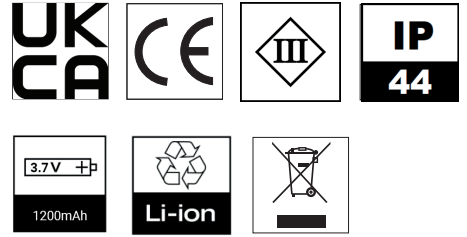
Installation Instructions

Instrucciones de instalación, Instructions d'installation, Installationsanleitung, إرشادات التركيب
 Installatie-instructies, Instruções de instalação, Installatie-instructies,
 設置手順説明, Οδηγίες εγκατάστασης



Product Code: [4L2/6016]
 [4L2/6017]

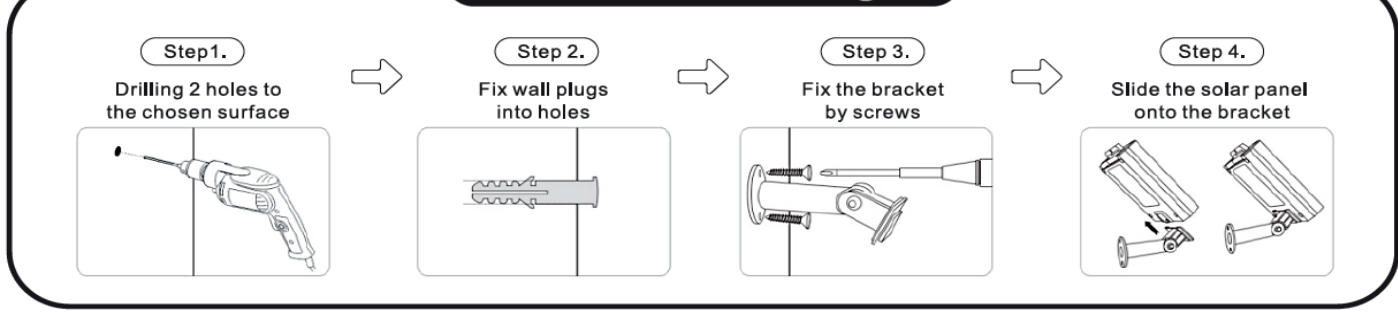
Please Visit
<https://4liteuk.com>
 downloads for our warranty
 and translations



List of accessories

- A** 1 x String lights
- B** 1 X SOLAR PANEL
Rechargeable Battery pre-installed
- C** 1x Mounting bracket
- D** 1 x Ground Stake
- E** 1 x USB charging cable
- F** 2 x Wall Plugs
- G** 2 x screw

1. Wall Mounting



Ansell Electrical Products
 Unit 6B, Stonecross Industrial
 Park,
 Yew Tree Way,
 Warrington,
 WA3 3JD

Ansell (Sales & Distribution)
 Unit 2, M2 Business Park,
 Duncrue Street,
 Belfast,
 BT3 9AQ

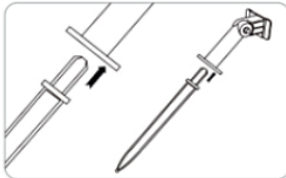
Ansell (Sales & Distribution) Republic of Ireland Limited
 Unit G1, Block G,
 Calmount Park, Calmount Avenue
 Dublin 12,
 D12 TH56

Warrington Tel: +44 (0)1942 433333 Belfast Tel: +44 (0)2890 773750 International Tel: +44 (0)1942 433343 Spain Tel: 00 34 938 005642

2. Installation to Ground

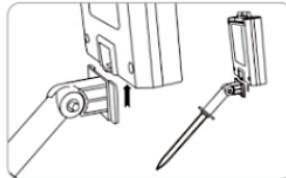
Step 1.

Connect the ground stake to the bracket



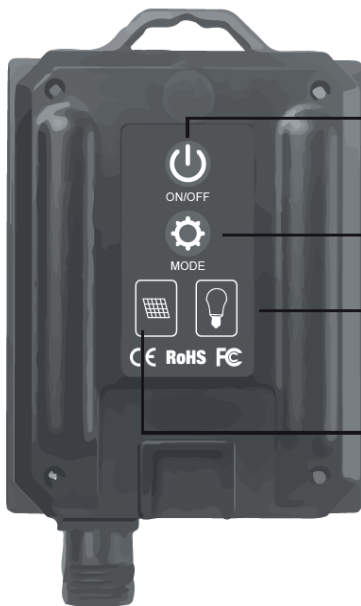
Step 2.

Slide the solar panel onto the bracket



Step 3.

Plug the solar panel to ground



ON



ON/OFF



MODE



CE RoHS FC

Mode adjustment key
(Long press for 3 seconds
to switch brightness)

Output indicator light

The charging indicator

MODE INTRODUCTION

1. Combination
2. In waves
3. Sequential
4. Slo Glo
5. Chasing/ Flash
6. Slow fade
7. Twinkle/ Flash
8. Steady on

Ensure you remove the battery separator before use

